



## Stathmin 1 (Phospho-Ser24) Antibody

**Cat. #:** ANTY011224

**Species:** Human, Mouse, Rat

**Quantity:** 100ug

**Concentration:** 100ug/100ul

**Storage and Stability:** Store at -20°C/1 year

**Immunogen:** The antiserum was produced against synthesized phosphopeptide derived from human Stathmin 1 around the phosphorylation site of serine 24 (I-L-SP-P-R).

**Specificity:** Stathmin 1 (phospho-Ser24) antibody detects endogenous levels of Stathmin 1 only when phosphorylated at serine 24.

**Tested Application:** WB and IHC

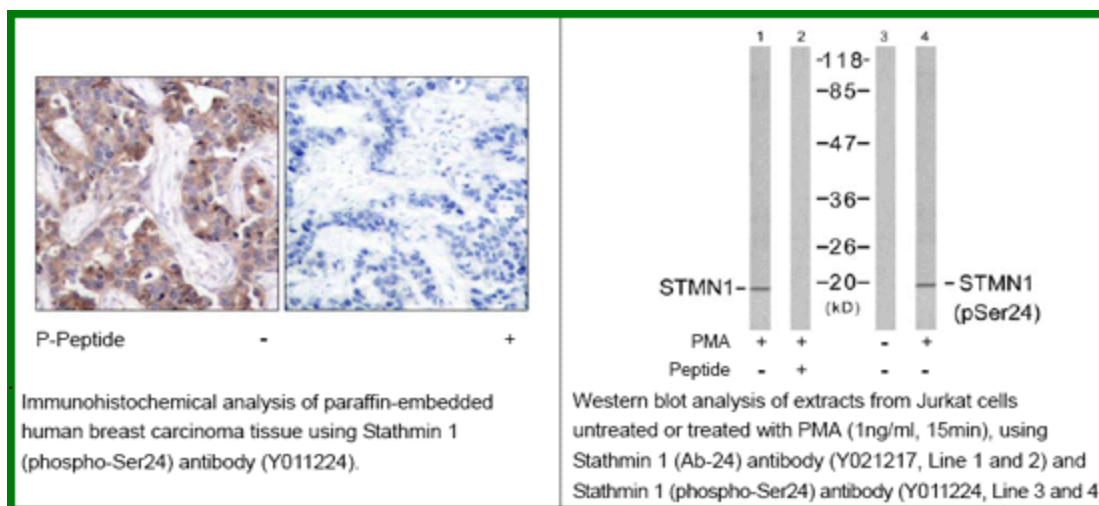
**Application Notes :** WB and IHC

**Raised In:** Rabbit

**Purity:** Rabbit IgG in phosphate buffered saline (without Mg<sup>2+</sup> and Ca<sup>2+</sup>), pH 7.4, 150mM NaCl, 0.02% sodium azide and 50% glycerol.

**Storage Buffer:** WB: 1:500~1:1000 IHC: 1:50~1:100

**Reference:** Boehm M, et al. (2002) EMBO J 21(13): 3390-3401. Vadlamudi RK, et al. (2005) Mol Cell Biol 25(9): 3726-3736. Zilfou JT, et al. (2001) Mol Cell Biol 21(12): 3974-3985.



**For research use only**

Antagene, Inc. Toll Free: 1-866-964-2589, Fax: 1-888-225-1868, [info@antageneinc.com](mailto:info@antageneinc.com),  
[www.antageneinc.com](http://www.antageneinc.com)