



## 4E-BP1(Phospho-Thr45)Antibody

**Cat. #:** ANTY011223

**Species:** Human, Mouse and Rat

**Quantity:** 100ug

**Concentration:** 100ug/100ul

**Storage and Stability:**

Store at -20°C/1 year

**Immunogen:**

The antiserum was produced against synthesized phosphopeptide derived from human 4E-BP1 around the phosphorylation site of threonine 45 (S-T-TP-P-G).

**Specificity:**

4E-BP1 (phospho-Thr45) antibody detects endogenous levels of 4E-BP1 only when phosphorylated at threonine 45. This antibody may cross-react with 4E-BP2 and 4E-BP3 when phosphorylated at equivalent sites.

**Tested application:** WB, IHC

**Application Notes:** Rabbit IgG in phosphate buffered saline (without Mg<sup>2+</sup> and Ca<sup>2+</sup>), pH 7.4, 150mM NaCl, 0.02% sodium azide and 50% glycerol.

**Raised In:** Rabbit

**Purity:**

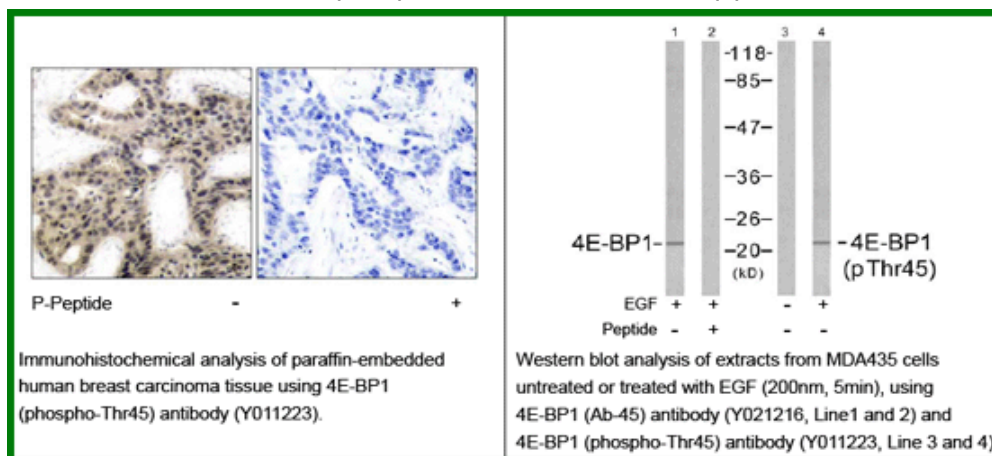
The antibody was affinity-purified from rabbit antiserum by affinity-chromatography using epitope-specific phosphopeptide. The antibody against non-phosphopeptide was removed by chromatography using non-phosphopeptide corresponding to the phosphorylation site.

**Storage buffer:** WB: 1:500~1:1000 IHC: 1:50~1:100

**Form:** Liquid

**References**

Gingras AC, et al. (1998) Genes Dev 12(4): 502-513. Brugarolas J, et al. (2004) Genes Dev 18(23): 2893-2904. Kumar V, et al. (2000) EMBO J 19(5): 1087-1097. Moody CA, et al. (2005) J Virol 79(9): 5499-5506. Burnett PE, et al. (1998) Proc Natl Acad Sci U S A 95(4): 1432-1437.



**For research use only**

Antagene, Inc. Toll Free: 1-866-964-2589, Fax: 1-888-225-1868, [info@antageneinc.com](mailto:info@antageneinc.com),  
[www.antageneinc.com](http://www.antageneinc.com)