



4E-BP1(Phospho-Thr36)Antibody

Cat. #: ANTY011222

Species: Human, Mouse, Rat

Quantity: 100ug

Concentration: 100ug/100ul

Storage and Stability: Store at -20°C/1 year

Immunogen: The antiserum was produced against synthesized phosphopeptide derived from human 4E-BP1 around the phosphorylation site of threonine 36 (S-T-TP-P-G).

Specificity: 4E-BP1 (phospho-Thr36)) antibody detects endogenous levels of 4E-BP1 only when phosphorylated at threonine 36. This antibody may cross-react with 4E-BP2 and 4E-BP3 when phosphorylated at equivalent sites.

Tested Application: WB, IHC

Application Notes : Rabbit IgG in phosphate buffered saline (without Mg²⁺ and Ca²⁺), pH 7.4, 150mM NaCl, 0.02% sodium azide and 50% glycerol.

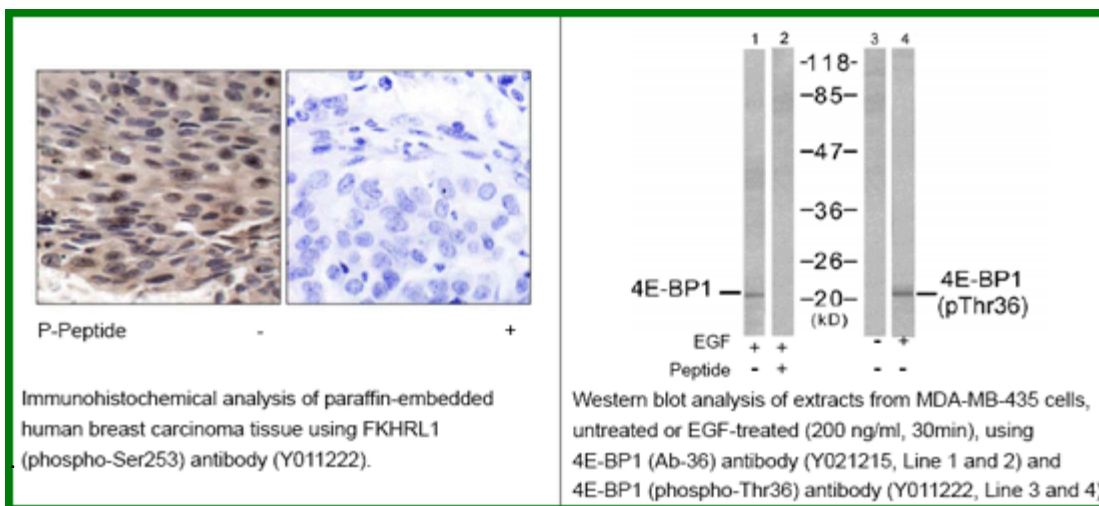
Raised In: Rabbit

Purity: The antibody was affinity-purified from rabbit antiserum by affinity-chromatography using epitope-specific phosphopeptide. The antibody against non-phosphopeptide was removed by chromatography using non-phosphopeptide corresponding to the phosphorylation site.

Storage Buffer: WB: 1:500~1:1000 IHC: 1:50~1:100

Form: Liquid

Reference: Gingras AC, et al. Genes Dev Nov. 2005 Feb 15. Mothe-Satney I, et al.(2000) J Biol Chem;15(21): 2852-64. Gingras AC, et al. (1999) Genes Dev;13(11): 1422-37. Lal L, et al.(2005) Blood;105(4): 1669-7.



For research use only

Antagene, Inc. Toll Free: 1-866-964-2589, Fax: 1-888-225-1868, info@antageneinc.com,
www.antageneinc.com