



mTOR (Phospho-Ser2448) Antibody

Cat. #: ANT011221

Species: Human, Mouse, Rat

Quantity: 100ug

Concentration: 100ug/100ul

Storage and Stability: Store at -20°C/1 year

Immunogen: The antiserum was produced against synthesized phosphopeptide derived from human mTOR around the phosphorylation site of serine 2448 (T-D-SP-Y-S).

Specificity: mTOR (phospho-Ser2448) antibody detects endogenous levels of mTOR only when phosphorylated at serine 2448.

Tested Application: IHC

Application Notes : Rabbit IgG in phosphate buffered saline (without Mg²⁺ and Ca²⁺), pH 7.4, 150mM NaCl, 0.02% sodium azide and 50% glycerol.

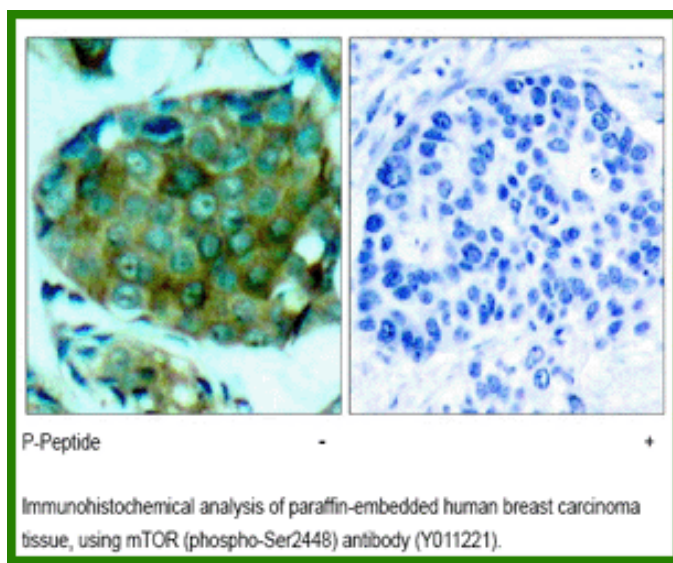
Raised In: Rabbit

Purity: The antibody was affinity-purified from rabbit antiserum by affinity-chromatography using epitope-specific phosphopeptide. The antibody against non-phosphopeptide was removed by chromatography using non-phosphopeptide corresponding to the phosphorylation site.

Storage Buffer: IHC: 1:50~1:100

Form: Liquid

Reference: Holz MK, et.al. (2005) J Biol Chem ;280:26089-26093 Chiang GG, et.al. (2005) J Biol Chem ;280: 25485-25490 Mothe-Satney I, et.al. (2004) J Biol Chem ;279: 42628-42637 Bolster DR, et.al. (2003) J Physiol ;553:213-220.



For research use only

Antagene, Inc. Toll Free: 1-866-964-2589, Fax: 1-888-225-1868, info@antageneinc.com,
www.antageneinc.com