



## NF-κB p65 (Phospho-Ser529) Antibody

**Cat. #:** ANTY011217

**Species:** Human, Mouse and Rat

**Quantity:** 100ug

**Concentration:** 100ug/100ul

**Storage and Stability:**

Store at -20°C/1 year

**Immunogen:**

The antiserum was produced against synthesized non-phosphopeptide derived from human NF-κB p65 around the phosphorylation site of serine 529 (L-L-SP-G-D).

**Specificity:**

NF-κB p65 (Ab-529) antibody detects endogenous levels of NF-κB p65 protein only when phosphorylated at serine 529.

**Tested application:** WB and IHC

**Application Notes:** Rabbit IgG in phosphate buffered saline (without Mg<sup>2+</sup> and Ca<sup>2+</sup>), pH 7.4, 150mM NaCl, 0.02% sodium azide and 50% glycerol.

**Raised In:** Rabbit

**Purity:**

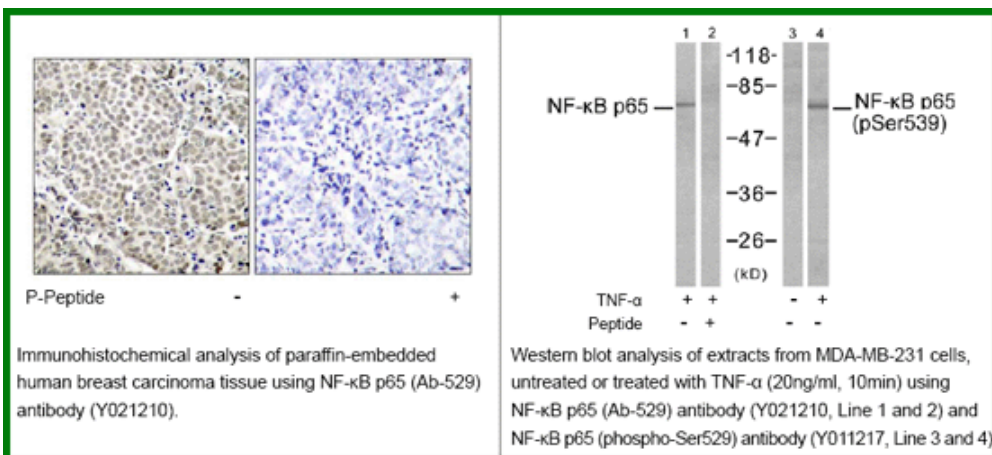
The antibody was affinity-purified from rabbit antiserum by affinity-chromatography using epitope-specific phosphopeptide. The antibody against non-phosphopeptide was removed by chromatography using non-phosphopeptide corresponding to the phosphorylation site.

**Storage buffer:** WB: 1:500~1:1000 IHC: 1:50~1:100

**Form:** Liquid

**References**

Xu C, et al (2005) Oncogene:24(28): 4486-95. McNulty SE, et al. (2004) Pigment Cell Res Apr; 17(2): 173-80. Madrid LV, et al. (2001) J Biol Chem: 276(22): 18934-40. Wang D, et al. (2000) J Biol Chem : 275(42): 32592-7.



**For research use only**

Antagene, Inc. Toll Free: 1-866-964-2589, Fax: 1-888-225-1868, [info@antageneinc.com](mailto:info@antageneinc.com),  
[www.antageneinc.com](http://www.antageneinc.com)