



Pyk2 (Phospho-Tyr402) Antibody

Cat. #: ANTY011216

Species: Human, Mouse and Rat

Quantity: 100ug

Concentration: 100ug/100ul

Storage and Stability:

Store at -20°C/1 year

Immunogen:

The antiserum was produced against synthesized phosphopeptide derived from human Pyk2 around the phosphorylation site of tyrosine 402 (D-I-YP-A-E).

Specificity:

Pyk2 (phospho-Tyr402) antibody detects endogenous levels of Pyk2 only when phosphorylated at tyrosine 402.

Tested application: WB and IHC

Application Notes: Rabbit IgG in phosphate buffered saline (without Mg²⁺ and Ca²⁺), pH 7.4, 150mM NaCl, 0.02% sodium azide and 50% glycerol.

Raised In: Rabbit

Purity:

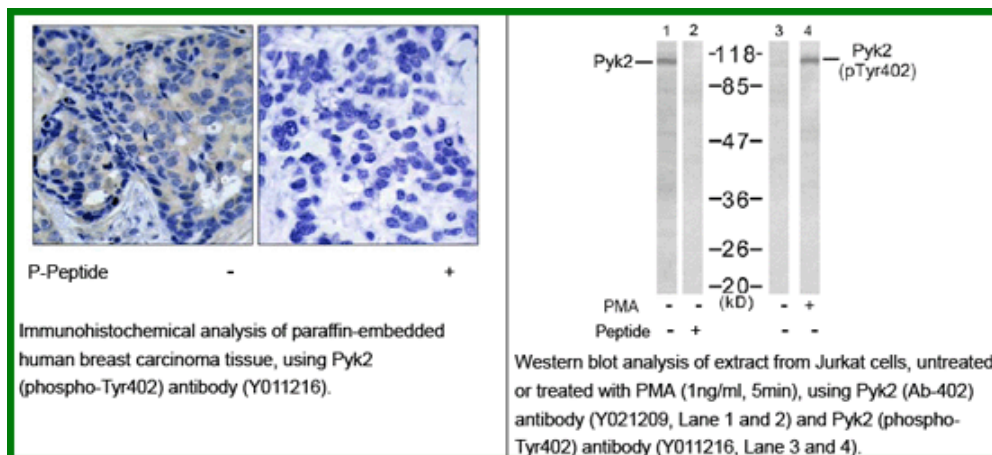
The antibody was affinity-purified from rabbit antiserum by affinity-chromatography using epitope-specific phosphopeptide. The antibody against non-phosphopeptide was removed by chromatography using non-phosphopeptide corresponding to the phosphorylation site.

Storage buffer: WB:1:500~1:1000 IHC: 1:50~1:100

Form: Liquid

References

Gluck SL, et al. (2004) J Clin Invest; 114(12): 1696-1699 Benzing T, et al. (2001) Proc Natl Acad Sci U S A; 98(17): 9784-9789 Tian D, et al. (2002) Mol Cell Biol; 22(8): 2650-2662 Lu Z, et al. (2001) Mol Cell Biol; 21(12): 4016-4031 Krishnan HH, et al. (2006) J Virol; 80(3): 1167-1180



For research use only

Antagene, Inc. Toll Free: 1-866-964-2589, Fax: 1-888-225-1868, info@antageneinc.com,
www.antageneinc.com