



## VASP (Phospho-Ser157) Antibody

**Cat. #:** ANTY011214

**Species:** Human, Mouse and Rat

**Quantity:** 100ug

**Concentration:** 100ug/100ul

### Storage and Stability:

Store at -20°C/1 year

### Immunogen:

The antiserum was produced against synthesized phosphopeptide derived from human VASP around the phosphorylation site of serine 157 (R-V-SP-N-A).

### Specificity:

VASP (phospho-Ser157) antibody detects endogenous levels of VASP only when phosphorylated at serine 157.

**Tested application:** WB and IHC

**Application Notes:** Rabbit IgG in phosphate buffered saline (without Mg<sup>2+</sup> and Ca<sup>2+</sup>), pH 7.4, 150mM NaCl, 0.02% sodium azide and 50% glycerol.

**Raised In:** Rabbit

### Purity:

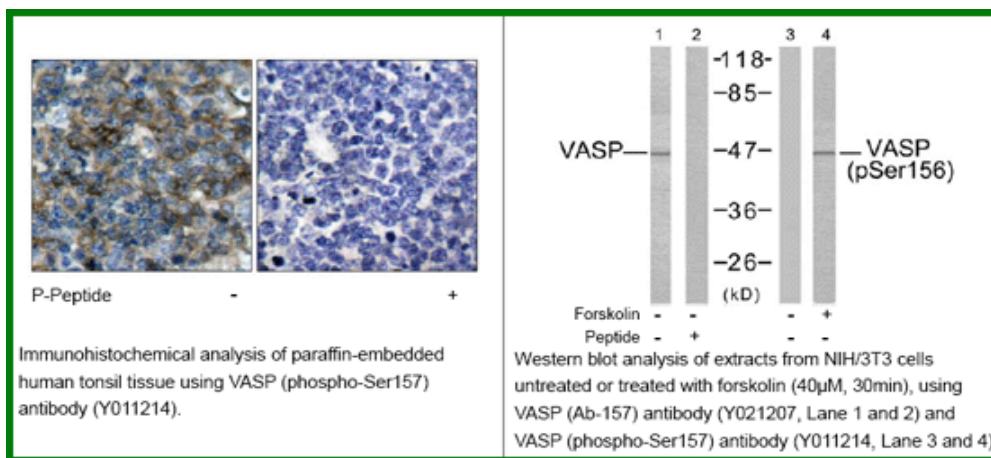
The antibody was affinity-purified from rabbit antiserum by affinity-chromatography using epitope-specific phosphopeptide. The antibody against non-phosphopeptide was removed by chromatography using non-phosphopeptide corresponding to the phosphorylation site.

**Storage buffer:** WB: 1:500~1:1000 IHC: 1:50~1:100

**Form:** Liquid

### References

Zhao WM, et al. (2001) EMBO J 20(9): 2315-2325. Millard TH, et al. (2005) EMBO J 24(2): 240-250. Kühnel K, et al. (2004) Proc Natl Acad Sci U S A 101(49): 17027-17032. Haffner C, et al. (1995) EMBO J 14(1): 19-27. Ramesh N, et al. (1997) Proc Natl Acad Sci U S A 94(26): 14671-14676.



### For research use only

Antagene, Inc. Toll Free: 1-866-964-2589, Fax: 1-888-225-1868, [info@antageneinc.com](mailto:info@antageneinc.com), [www.antageneinc.com](http://www.antageneinc.com)