



IkB-ε (Phospho-Ser22) Antibody

Cat. #: ANTY011213

Species: Human, Mouse

Quantity: 100ug

Concentration: 100ug/100ul

Storage and Stability: Store at -20°C/1 year

Immunogen: The antiserum was produced against synthesized phosphopeptide derived from human IkB-ε around the phosphorylation site of serine 22 (I-E-SP-L-R).

Specificity: IkB-ε (Phospho-Ser22) antibody detects endogenous levels of IkB-ε only when phosphorylated at serine 22.

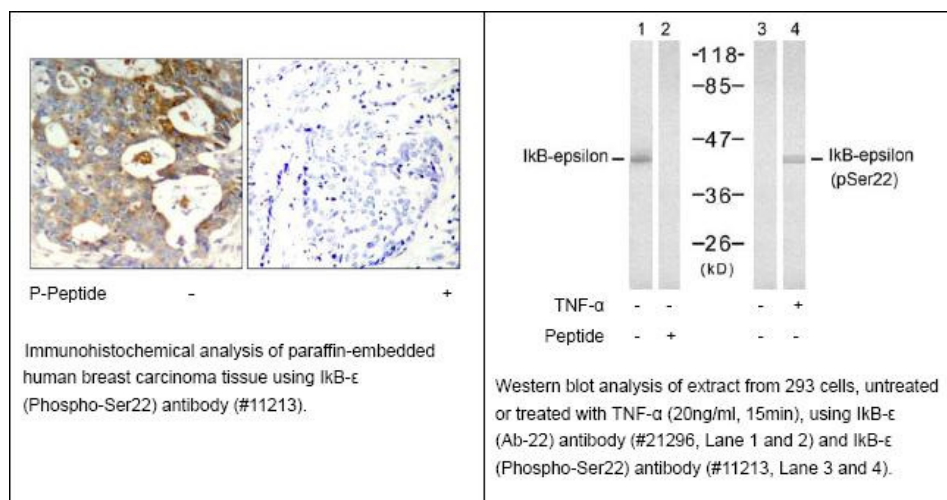
Tested Application: WB and IHC

Application Notes: Rabbit IgG in phosphate buffered saline (without Mg²⁺ and Ca²⁺), pH 7.4, 150mM NaCl, 0.02% sodium azide and 50% glycerol.

Raised In: Rabbit

Storage buffer: WB: 1:500~1:1000; IHC: 1:50~1:100

Purity: The antibody was affinity-purified from rabbit antiserum by affinity-chromatography using epitope-specific phosphopeptide. The antibody against non-phosphopeptide was removed by chromatography using non-phosphopeptide corresponding to the phosphorylation site.



For research use only

Antagene, Inc. Toll Free: 1-866-964-2589, Fax: 1-888-225-1868, info@antageneinc.com,
www.antageneinc.com