



p27Kip1 (Phospho-Thr187) Antibody

Cat. #: ANTY011208

Species: Human, Mouse and Rat

Quantity: 100ug

Concentration: 100ug/100ul

Storage and Stability: Store at -20°C/1 year

Immunogen: The antiserum was produced against synthesized phosphopeptide derived from human p27Kip1 around the phosphorylation site of threonine 187 (E-Q-TP-P-K).

Specificity: p27Kip1 (phospho-Thr187) antibody detects endogenous levels of p27Kip1 only when phosphorylated at threonine 187.

Tested Application: IHC

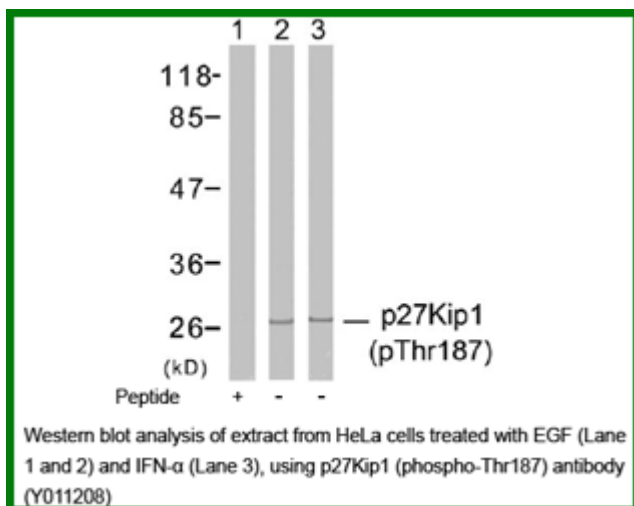
Application Notes: Rabbit IgG in phosphate buffered saline (without Mg²⁺ and Ca²⁺), pH 7.4, 150mM NaCl, 0.02% sodium azide and 50% glycerol.

Raised In: Rabbit

Storage buffer: WB: 1:500~1:1000

Purity: The antibody was affinity-purified from rabbit antiserum by affinity-chromatography using epitope-specific phosphopeptide. The antibody against non-phosphopeptide was removed by chromatography using non-phosphopeptide corresponding to the phosphorylation site.

Reference: Eguchi H, et al. (2003) Cancer Res; 63(15): 4739-46 Le XF, et al. (2003) J Biol Chem; Connor MK, et al. (2003) Mol Biol Cell; 14(1): 201-13 Fujita N, et al. (2002) J Biol Chem; 277(32): 28706-13 Ishida N, et al. (2000) J Biol Chem; 275(33): 25146-54



For research use only

Antagene, Inc. Toll Free: 1-866-964-2589, Fax: 1-888-225-1868, info@antageneinc.com,
www.antageneinc.com