



Ezrin (Phospho-Thr566) Antibody

Cat. #: ANTY011202

Species: Human, Mouse and Rat

Quantity: 100ug

Concentration: 100ug/100ul

Storage and Stability: Store at -20°C/1 year

Immunogen: The antiserum was produced against synthesized phosphopeptide derived from human Ezrin around the phosphorylation site of tyrosine 566 (Y-K-TP-L-R).

Specificity: Ezrin (phospho-Tyr566) antibody detects endogenous levels of Ezrin only when phosphorylated at tyrosine 566.

Tested Application: WB

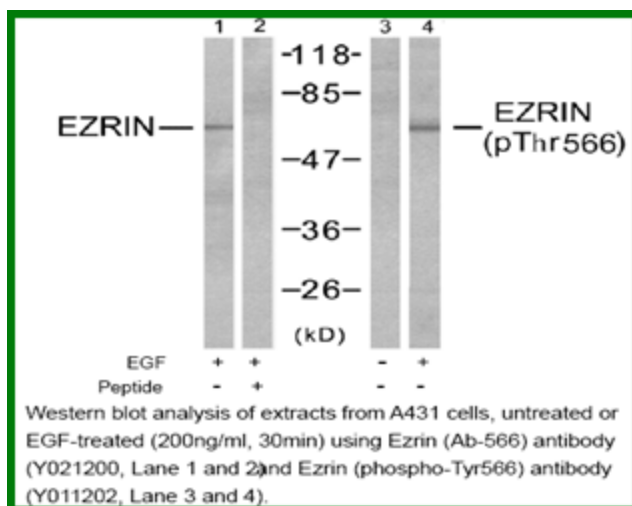
Application Notes: Rabbit IgG in phosphate buffered saline (without Mg²⁺ and Ca²⁺), pH 7.4, 150mM NaCl, 0.02% sodium azide and 50% glycerol.

Raised In: Rabbit

Storage buffer: WB: 1:500~1:1000

Purity: The antibody was affinity-purified from rabbit antiserum by affinity-chromatography using epitope-specific phosphopeptide. The antibody against non-phosphopeptide was removed by chromatography using non-phosphopeptide corresponding to the phosphorylation site.

Reference: Zhou R, et al. (2005) J Cell Sci: 118 (Pt 19): 4381-91 Shiue H, et al.(2005) J Biol Chem: 280(2): 1688-95 Zhao H, et al. (2004) Proc Natl Acad Sci U S A: 101(25): 9485-90 Fievet BT, et al. (2004) J Cell Biol: 164(5): 653-9



For research use only

Antagene, Inc. Toll Free: 1-866-964-2589, Fax: 1-888-225-1868, info@antageneinc.com,
www.antageneinc.com