



## SMC1 (Phospho-Ser957) Antibody

**Cat. #:** ANTY011198

**Species:** Human, Mouse, Rat

**Quantity:** 100ug

**Concentration:** 100ug/100ul

**Storage and Stability:** Store at -20°C/1 year

**Immunogen:** The antiserum was produced against synthesized phosphopeptide derived from human SMC1 around the phosphorylation site of serine 957 (G-S-SP-Q-G).

**Specificity:** SMC1 (phospho-Ser957) antibody detects endogenous levels of SMC1 only when phosphorylated at serine 957.

**Tested Application:** IHC

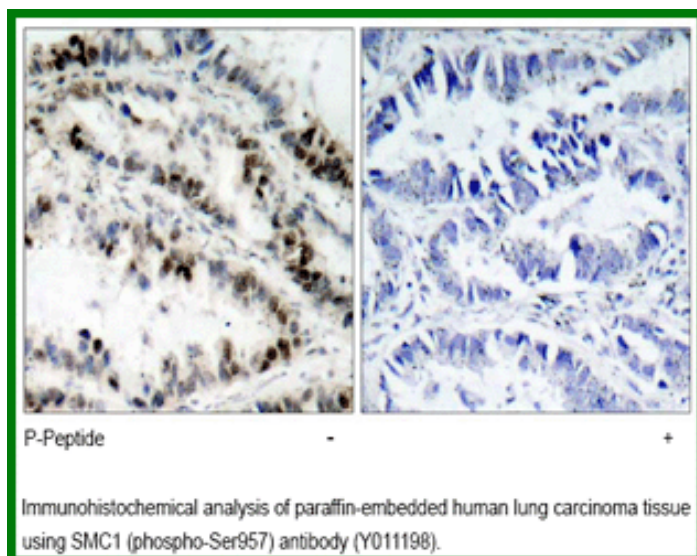
**Application Notes:** Rabbit IgG in phosphate buffered saline (without Mg<sup>2+</sup> and Ca<sup>2+</sup>), pH 7.4, 150mM NaCl, 0.02% sodium azide and 50% glycerol.

**Raised In:** Rabbit

**Storage buffer:** WB: 1:500~1:1000

**Purity:** The antibody was affinity-purified from rabbit antiserum by affinity-chromatography using epitope-specific phosphopeptide. The antibody against non-phosphopeptide was removed by chromatography using non-phosphopeptide corresponding to the phosphorylation site.

**Reference:** Yang XM. et al. (2004) Mol Cell Biol. 24(12): 5290-5303. Kim ST. et al. (2002) Genes Dev. 16(5): 560-570. Revenkova E. et al. (2001) Mol Cell Biol. 21(20): 6984-6998.



**For research use only**

Antagene, Inc. Toll Free: 1-866-964-2589, Fax: 1-888-225-1868, [info@antageneinc.com](mailto:info@antageneinc.com),  
[www.antageneinc.com](http://www.antageneinc.com)