



HDAC5 (Phospho-Ser498) Antibody

Cat. #: ANTY011193

Species: Human, Mouse and Rat

Quantity: 100ug

Concentration: 100ug/100ul

Storage and Stability: Store at -20°C/1 year

Immunogen: The antiserum was produced against synthesized phosphopeptide derived from human HDAC5 around the phosphorylation site of serine 498 (T-Q-SP-S-P).

Specificity: HDAC5 (phospho-Ser498) antibody detects endogenous levels of HDAC5 only when phosphorylated at serine 498.

Tested Application: WB and IHC

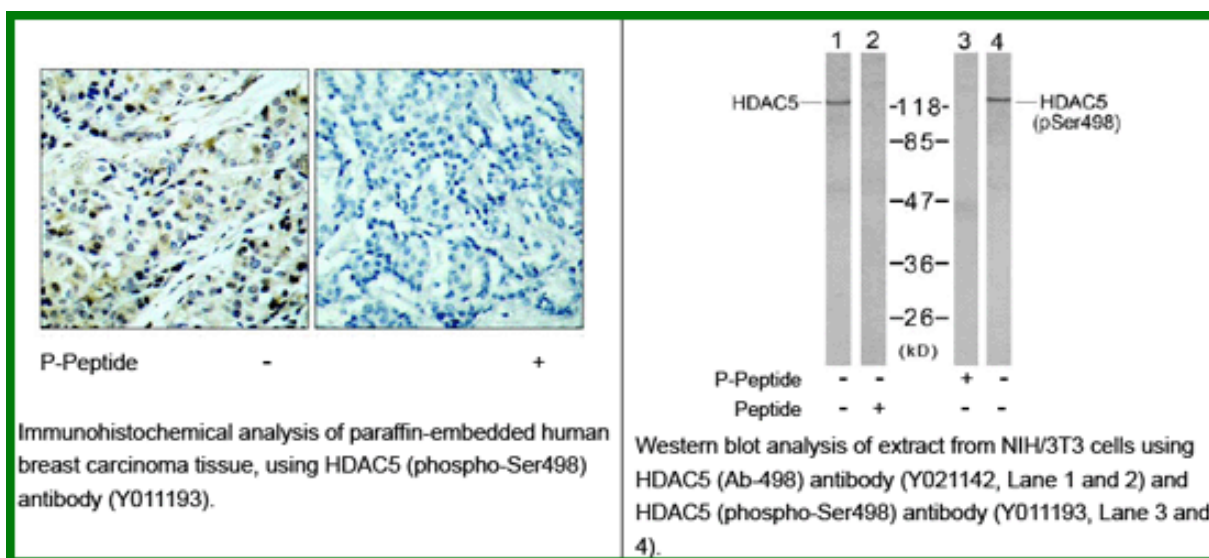
Application Notes: Rabbit IgG in phosphate buffered saline (without Mg²⁺ and Ca²⁺), pH 7.4, 150mM NaCl, 0.02% sodium azide and 50% glycerol.

Raised In: Rabbit

Storage buffer: WB: 1:500~1:1000 IHC: 1:50~1:100

Purity: The antibody was affinity-purified from rabbit antiserum by affinity-chromatography using epitope-specific phosphopeptide. The antibody against non-phosphopeptide was removed by chromatography using non-phosphopeptide corresponding to the phosphorylation site.

Reference: Doppler H, et al. (2005) J Biol Chem. 280(15):15013-15019. McKinsey TA, et al. (2000) Nature. 408(6808): 106-111.



For research use only

Antagene, Inc. Toll Free: 1-866-964-2589, Fax: 1-888-225-1868, info@antageneinc.com,
www.antageneinc.com