



Histone H3.1 (Phospho-Ser10) Antibody

Cat. #: ANTY011184

Species: Human, Mouse, Rat

Quantity: 100ug

Concentration: 100ug/100ul

Storage and Stability: Store at -20°C/1 year

Immunogen: The antiserum was produced against synthesized phosphopeptide derived from human Histone H3.1 around the phosphorylation site of serine 10 (R-K-SP-T-G).

Specificity: Histone H3.1 (phospho-Ser10) antibody detects endogenous levels of Histone H3.1 only when phosphorylated at serine 10.

Tested Application: WB and IHC

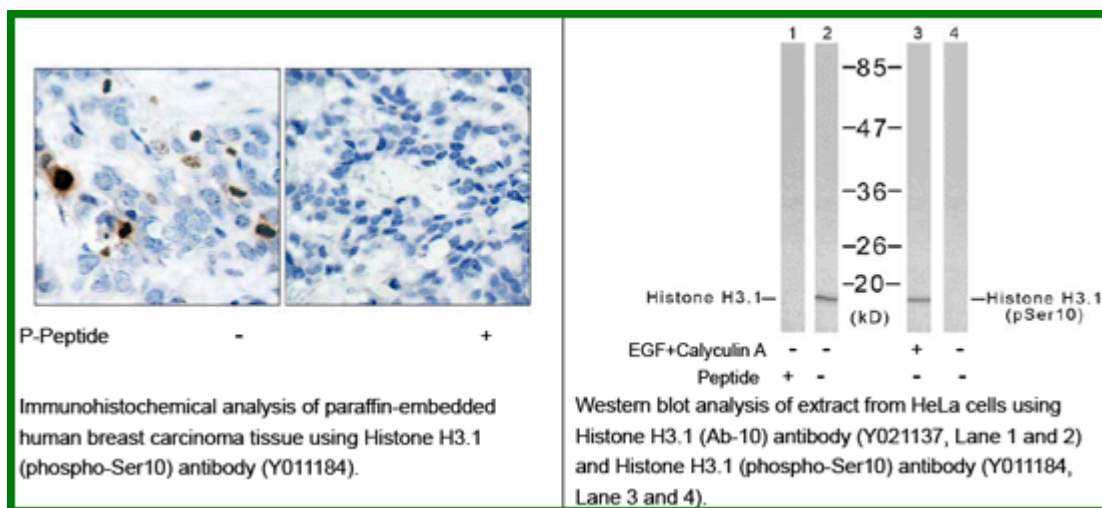
Application Notes : Rabbit IgG in phosphate buffered saline (without Mg²⁺ and Ca²⁺), pH 7.4, 150mM NaCl, 0.02% sodium azide and 50% glycerol.

Raised In: Rabbit

Purity: The antibody was affinity-purified from rabbit antiserum by affinity-chromatography using epitope-specific phosphopeptide. The antibody against non-phosphopeptide was removed by chromatography using non-phosphopeptide corresponding to the phosphorylation site.

Storage buffer: WB: 1:500~1:1000 IHC: 1:50~1:100

Reference: Dai J, et al. (2005) Genes Dev 19(4): 472-488. Yih LH, et al. (2005) Carcinogenesis 26(1): 53-63.



For research use only

Antagene, Inc. Toll Free: 1-866-964-2589, Fax: 1-888-225-1868, info@antageneinc.com,
www.antageneinc.com