



ASK1(Phospho-Ser966)Antibody

Cat. #: ANTY011179

Species: Human, Mouse

Quantity: 100ug

Concentration: 100ug/100ul

Storage and Stability: Store at -20°C/1 year

Immunogen: The antiserum was produced against synthesized phosphopeptide derived from human ASK1 around the phosphorylation site of serine 966 (S-I-SP-L-P).

Specificity: ASK1 (phospho-Ser966) antibody detects endogenous levels of ASK1 only when phosphorylated at serine 966.

Tested Application: IHC

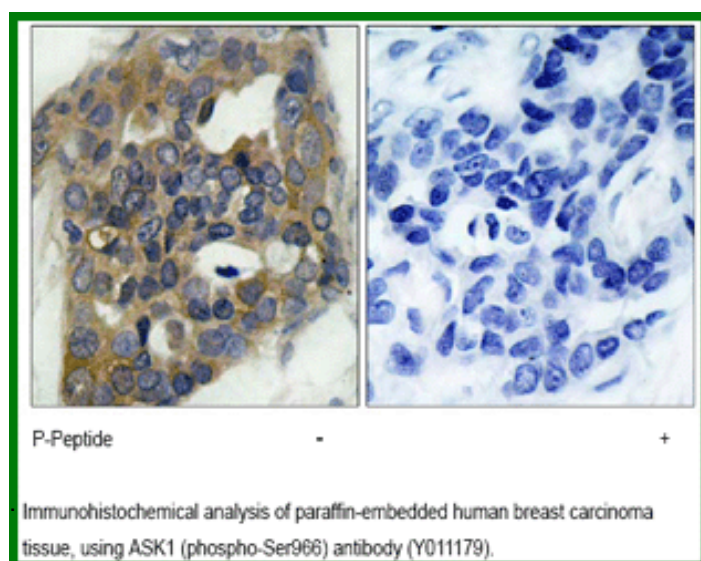
Application Notes : Rabbit IgG in phosphate buffered saline (without Mg²⁺ and Ca²⁺), pH 7.4, 150mM NaCl, 0.02% sodium azide and 50% glycerol.

Raised In: Rabbit

Purity: The antibody was affinity-purified from rabbit antiserum by affinity-chromatography using epitope-specific phosphopeptide. The antibody against non-phosphopeptide was removed by chromatography using non-phosphopeptide corresponding to the phosphorylation site.

Storage Buffer: IHC: 1:50~1:100

Reference: Zhang W, et al. (2005) J Biol Chem. 280(19): 19036-19044. Fujii K, et al. (2004) Oncogene. 23(29):5099-5104. Goldman EH, et al. (2004) J Biol Chem 2004 Mar 12; 279(11): 10442-10449. Zhang L, et al. (1999) Proc Natl Acad Sci U S A. 96(15): 8511-8515.



For research use only

Antagene, Inc. Toll Free: 1-866-964-2589, Fax: 1-888-225-1868, info@antageneinc.com,
www.antageneinc.com