



SEK1/MKK4 (Phospho-Ser80) Antibody

Cat. # ANTY011177

Species: Human, Mouse and Rat

Quantity: 100ug

Concentration: 100ug/100ul

Storage and Stability: Store at -20°C/1 year

Immunogen : The antiserum was produced against synthesized phosphopeptide derived from human SEK1/MKK4 around the phosphorylation site of serine 80 (T-H-SP-I-E).

Specificity: SEK1/MKK4 (phospho-Ser80) antibody detects endogenous levels of SEK1/MKK4 only when phosphorylated at serine 80.

Tested application: WB and IHC

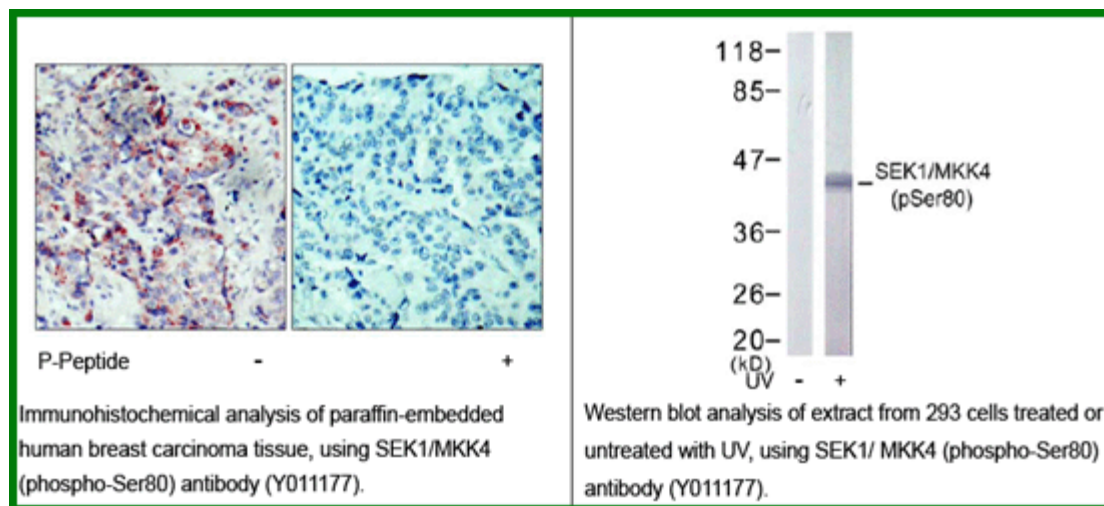
Application Notes: Rabbit IgG in phosphate buffered saline (without Mg²⁺ and Ca²⁺), pH 7.4, 150mM NaCl, 0.02% sodium azide and 50% glycerol.

Raised In: Rabbit

Purity : The antibody was affinity-purified from rabbit antiserum by affinity-chromatography using epitope-specific phosphopeptide. The antibody against non-phosphopeptide was removed by chromatography using non-phosphopeptide corresponding to the phosphorylation site.

Form: Liquid

References: Park HS, et al. (2002) J Biol Chem; 277(4): 2573-8.



For research use only

Antagene, Inc. Toll Free: 1-866-964-2589, Fax: 1-888-225-1868, info@antageneinc.com,
www.antageneinc.com