



SEK1/MKK4 (Phospho-Thr261) Antibody

Cat. # ANTY011176

Species: Human, Mouse and Rat

Quantity: 100ug

Concentration: 100ug/100ul

Storage and Stability: Store at -20°C/1 year

Immunogen :

The antiserum was produced against synthesized phosphopeptide derived from human SEK1/MKK4 around the phosphorylation site of threonine261 (A-K-TP-R-D)

Specificity: SEK1/MKK4 (phospho-Thr261) antibody detects endogenous levels of SEK1/MKK4 only when phosphorylated at threonine 261.

Tested application: IHC

Application Notes Rabbit IgG in phosphate buffered saline (without Mg²⁺ and Ca²⁺), pH 7.4, 150mM NaCl, 0.02% sodium azide and 50% glycerol.

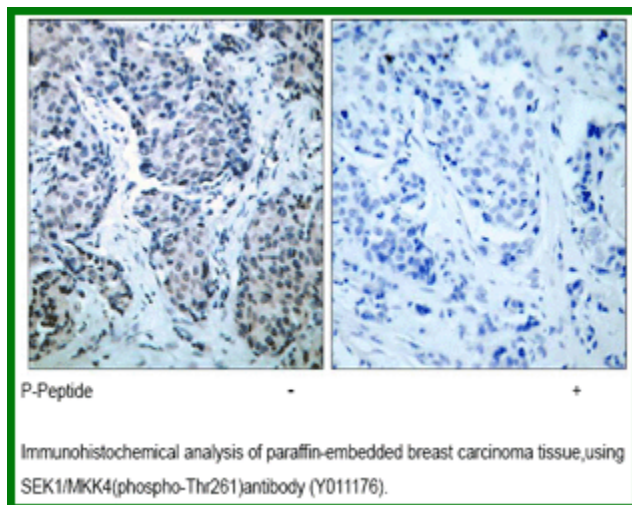
Raised In: Rabbit

Purity : The antibody was affinity-purified from rabbit antiserum by affinity-chromatography using epitope-specific phosphopeptide. The antibody against non-phosphopeptide was removed by chromatography using non-phosphopeptide corresponding to the phosphorylation site.

Storage buffer: IHC: 1:50~1:100

Form: Liquid

References: Wang W, et al. (2002) Mol Cell Biol; 22(10): 3389-403. Leung IW, et al. (2001) J Biol Chem; 276(3): 1961-7.



For research use only

Antagene, Inc. Toll Free: 1-866-964-2589, Fax: 1-888-225-1868, info@antageneinc.com,
www.antageneinc.com