



## AMPK1/AMPK2 (Phospho-Ser485/Ser491)

**Cat. #** ANT011174

**Species:** Human, Mouse and Rat

**Quantity:** 100ug

**Concentration:** 100ug/100ul

**Storage and Stability:** Store at -20°C/1 year

**Immunogen :** The antiserum was produced against synthesized phosphopeptide derived from human AMPK1/AMPK2 around the phosphorylation site of serine 485/491 (S-G- SP-V-S).

**Specificity:** AMPK1/AMPK2 (phospho-Ser485/Ser491) antibody detects endogenous levels of AMPK1/AMPK2 only when phosphorylated at serine 485 or serine 491.

**Tested application:** WB and IHC

**Application Notes:** Rabbit IgG in phosphate buffered saline (without Mg<sup>2+</sup> and Ca<sup>2+</sup>), pH 7.4, 150mM NaCl, 0.02% sodium azide and 50% glycerol.

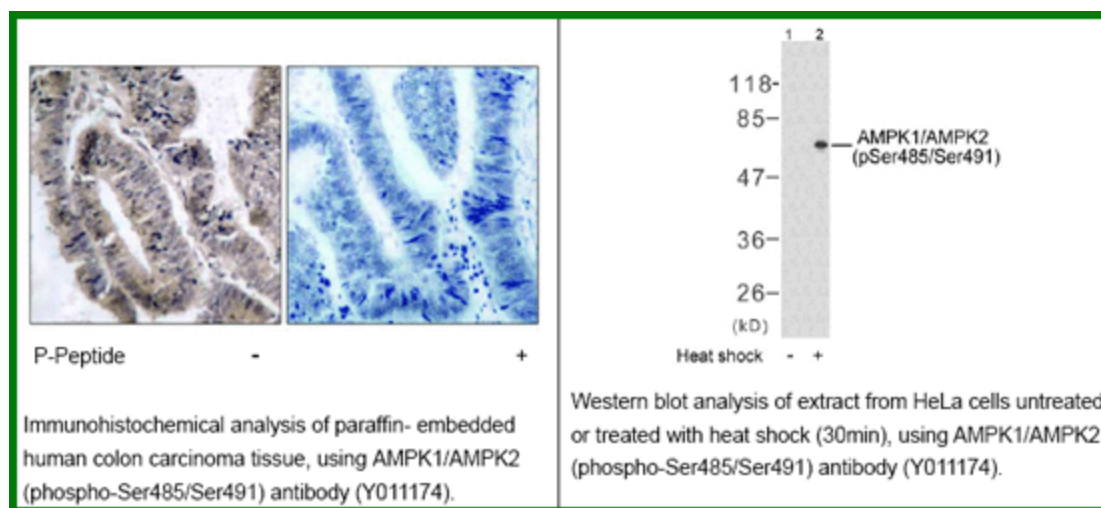
**Raised In:** Rabbit

**Purity :** The antibody was affinity-purified from rabbit antiserum by affinity-chromatography using epitope-specific phosphopeptide. The antibody against non-phosphopeptide was removed by chromatography using non-phosphopeptide corresponding to the phosphorylation site.

**Storage buffer:** WB: 1:500~1:1000 IHC: 1:50~1:100

**Form:** Liquid

**References:** Kim YJ, et al. (2004) Mol Cell Biol 24: 9986-9999 Humphries LA, et al. (2004) J Biol Chem 279 : 37651-37661 Suzuki-Inoue K, et al. (2004) Biochem J 378 : 1023-1029 Rodriguez R, et al. (2003) Biochem J 374 : 269-280



**For research use only**

Antagene, Inc. Toll Free: 1-866-964-2589, Fax: 1-888-225-1868, [info@antageneinc.com](mailto:info@antageneinc.com),  
[www.antageneinc.com](http://www.antageneinc.com)