



PKC θ (Phospho-Ser695) Antibody

Cat. # ANTY011173

Species: Human, Mouse and Rat

Quantity: 100ug

Concentration: 100ug/100ul

Storage and Stability: Store at -20°C/1 year

Immunogen : The antiserum was produced against synthesized phosphopeptide derived from human PKC θ around the phosphorylation site of serine 695 (N-F-SP-F-M).

Specificity: PKC θ (phospho-Ser695) antibody detects endogenous levels of PKC θ only when phosphorylated at serine 695.

Tested application: WB and IHC

Application Notes: Rabbit IgG in phosphate buffered saline (without Mg²⁺ and Ca²⁺), pH 7.4, 150mM NaCl, 0.02% sodium azide and 50% glycerol.

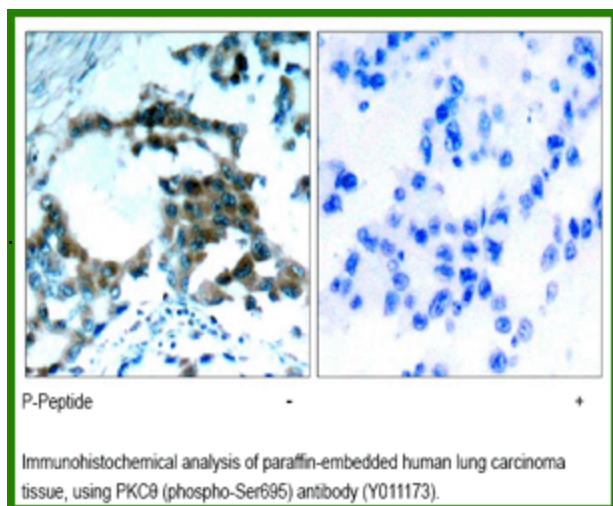
Raised In: Rabbit

Purity : The antibody was affinity-purified from rabbit antiserum by affinity-chromatography using epitope-specific phosphopeptide. The antibody against non-phosphopeptide was removed by chromatography using non-phosphopeptide corresponding to the phosphorylation site.

Storage buffer: WB: 1:500~1:1000 IHC: 1:50~1:100

Form: Liquid

References: Kim YJ, et al. (2004) Mol Cell Biol 24: 9986-9999 Humphries LA, et al. (2004) J Biol Chem 279 : 37651-37661 Suzuki-Inoue K, et al. (2004) Biochem J 378 : 1023-1029 Rodriguez R, et al. (2003) Biochem J 374 : 269-280



For research use only

Antagene, Inc. Toll Free: 1-866-964-2589, Fax: 1-888-225-1868, info@antageneinc.com,
www.antageneinc.com