



PKC β (Phospho-Thr642) Antibody

Cat. # ANTY011172

Species: Human, Mouse and Rat

Quantity: 100ug

Concentration: 100ug/100ul

Storage and Stability: Store at -20°C/1 year

Immunogen : The antiserum was produced against synthesized phosphopeptide derived from human PKC β around the phosphorylation site of threonine 642 (E-L-TP-P-T).

Specificity: PKC β (phospho-Thr642) antibody detects endogenous levels of PKC β only when phosphorylated at threonine 642.

Tested application: WB and IHC

Application Notes: Rabbit IgG in phosphate buffered saline (without Mg²⁺ and Ca²⁺), pH 7.4, 150mM NaCl, 0.02% sodium azide and 50% glycerol.

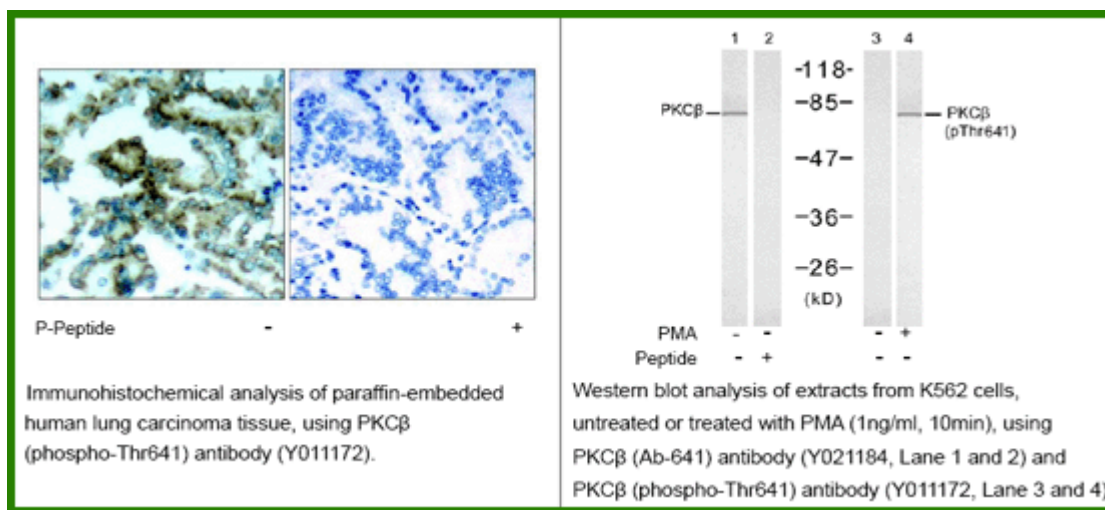
Raised In: Rabbit

Purity : The antibody was affinity-purified from rabbit antiserum by affinity-chromatography using epitope-specific phosphopeptide. The antibody against non-phosphopeptide was removed by chromatography using non-phosphopeptide corresponding to the phosphorylation site.

Storage buffer: WB: 1:500~1:1000 IHC: 1:50-1:100

Form: Liquid

References: Zhang Y, et al. (2006) Mol Cell Biol ; 26: 6748-6761 Castoria G, et al. (2004) Mol Cell Biol ; 24: 7643-7653 Marcil J, et al. (1999) Biochem J ; 337:185-192 Bornancin F, et al. (1996) Curr Biol ; 6:1114-1123.



For research use only

Antagene, Inc. Toll Free: 1-866-964-2589, Fax: 1-888-225-1868, info@antageneinc.com,
www.antageneinc.com