



PAK1/PAK2/PAK3 (Phospho-Thr423/Thr402/Thr421) Antibody

Cat. # ANTY011165

Species: Human, Mouse and Rat

Quantity: 100ug

Concentration: 100ug/100ul

Storage and Stability: Store at -20°C/1 year

Immunogen : The antiserum was produced against synthesized phosphopeptide derived from human PAK1 around the phosphorylation site of threonine 423 (R-S-TP-M-V).

Specificity: PAK1/PAK2/PAK3 (Phospho-Thr423/Thr402/Thr421) antibody detects endogenous levels of PAK1/PAK2/PAK3 only when phosphorylated at threonine 423/402/421.

Tested application: IHC

Application Notes: Rabbit IgG in phosphate buffered saline (without Mg²⁺ and Ca²⁺), pH 7.4, 150mM NaCl, 0.02% sodium azide and 50% glycerol.

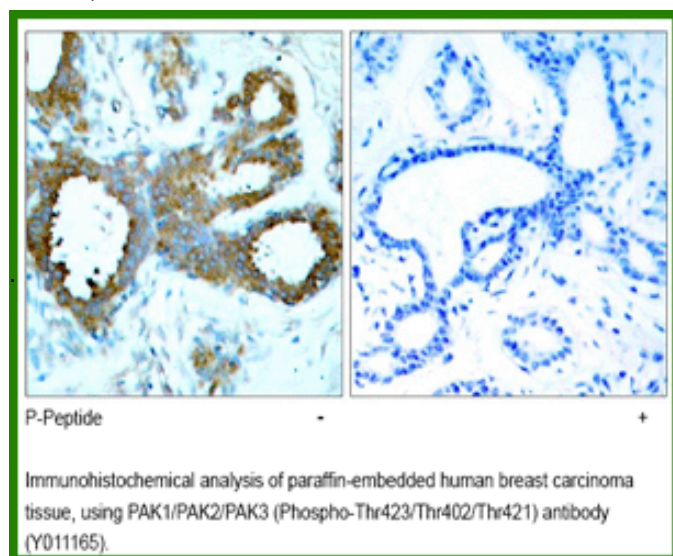
Raised In: Rabbit

Purity : The antibody was affinity-purified from rabbit antiserum by affinity-chromatography using epitope-specific phosphopeptide. The antibody against non-phosphopeptide was removed by chromatography using non-phosphopeptide corresponding to the phosphorylation site.

Storage buffer: IHC: 1:50-1:100

Form: Liquid

References: Parsons M, et al. (2005) Mol Cell Biol ; 25:1680-1695. Jung JH, et al. (2005) J Biol Chem; 280:40025-40031. Lampugnani MG, et al. (2002) Mol Biol Cell ; 13: 1175-1189 Wang RA, et al. (2002) EMBO J; 21: 5437 - 5447.



For research use only

Antagene, Inc. Toll Free: 1-866-964-2589, Fax: 1-888-225-1868, info@antageneinc.com,
www.antageneinc.com