



STAT1 (Phospho-Ser727) Antibody

Cat. #: ANTY011163

Species: Human, Mouse and Rat

Quantity: 100ug

Concentration: 100ug/100ul

Storage and Stability:

Store at -20°C/1 year

Immunogen:

The antiserum was produced against synthesized phosphopeptide derived from human STAT1 around the phosphorylation site of serine 727 (P-M-SP-P-E).

Specificity:

STAT1 (phospho-Ser727) antibody detects endogenous levels of STAT1 only when phosphorylated at serine 727.

Tested application: IHC

Application Notes: Rabbit IgG in phosphate buffered saline (without Mg²⁺ and Ca²⁺), pH 7.4, 150mM NaCl, 0.02% sodium azide and 50% glycerol.

Raised In: Rabbit

Purity:

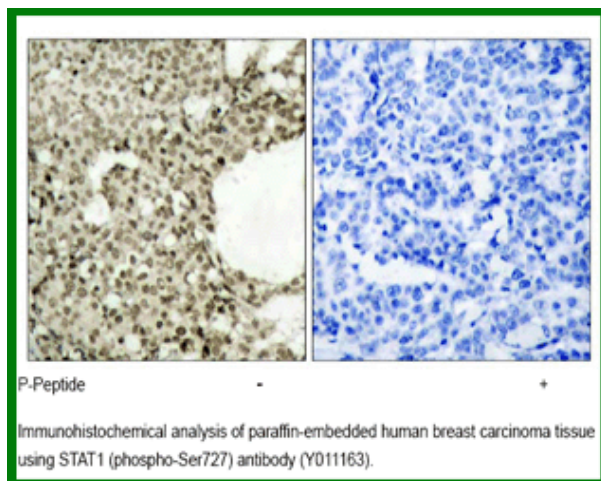
The antibody was affinity-purified from rabbit antiserum by affinity-chromatography using epitope-specific phosphopeptide. The antibody against non-phosphopeptide was removed by chromatography using non-phosphopeptide corresponding to the phosphorylation site.

Storage buffer: IHC: 1:50~1:100

Form: Liquid

References

Yuan ZM, et al. (1999) Nature.399 (6738): 814-817. Schindler C, et al. (1992) Proc. Natl. Acad. Sci. U.S.A 89:7836-7839 Strausberg R.L (2002). Proc. Natl. Acad. Sci. U.S.A. 99:16899-16903. Quelle F.W., (1995) J. Biol. Chem. 270:20775-20780



For research use only

Antagene, Inc. Toll Free: 1-866-964-2589, Fax: 1-888-225-1868, info@antageneinc.com,
www.antageneinc.com