



IkB- α (Phospho-Tyr42) Antibody

Cat. # ANTY011162

Species: Human, Mouse and Rat

Quantity: 100ug

Concentration: 100ug/100ul

Storage and Stability: Store at -20°C/1 year

Immunogen : The antiserum was produced against synthesized phosphopeptide derived from human IkB- α around the phosphorylation site of tyrosine 42 (E-E-YP-E-Q).

Specificity: IkB- α (phospho-Tyr42) antibody detects endogenous levels of IkB- α only when phosphorylated at tyrosine 42.

Tested application: IHC

Application Notes: Rabbit IgG in phosphate buffered saline (without Mg²⁺ and Ca²⁺), pH 7.4, 150mM NaCl, 0.02% sodium azide and 50% glycerol.

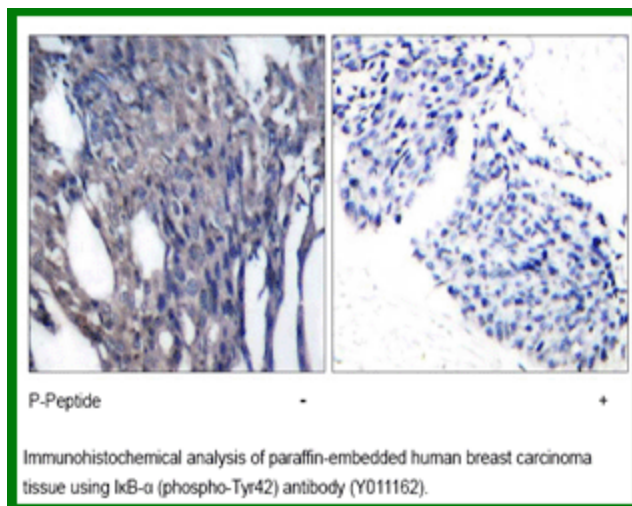
Raised In: Rabbit

Purity : The antibody was affinity-purified from rabbit antiserum by affinity-chromatography using epitope-specific phosphopeptide. The antibody against non-phosphopeptide was removed by chromatography using non-phosphopeptide corresponding to the phosphorylation site.

Storage buffer: IHC: 1:50~1:100

Form: Liquid

References: Béraud C, et al. (1999) Proc Natl Acad Sci U S A 96(2): 429-434. Sundström S, et al. (2005) J Virol 79(4): 2230-2239. Liu L, et al. (1998) Mol Cell Biol 18(7): 4221-4234. Shrivastava A, et al. (1998) J Virol 72(12): 9722-9728.



For research use only

Antagene, Inc. Toll Free: 1-866-964-2589, Fax: 1-888-225-1868, info@antageneinc.com,
www.antageneinc.com