



## MEK1 (Phospho-Ser221) Antibody

**Cat. #** ANTY011161

**Species:** Human, Mouse and Rat

**Quantity:** 100ug

**Concentration:** 100ug/100ul

**Storage and Stability:** Store at -20°C/1 year

**Immunogen :** The antiserum was produced against synthesized phosphopeptide derived from human MEK1 around the phosphorylation site of serine 221 (A-N-SP-F-V).

**Specificity:** MEK1 (phospho-Ser221) antibody detects endogenous levels of MEK1 only when phosphorylated at serine 221.

**Tested application:** WB and IHC

**Application Notes:** Rabbit IgG in phosphate buffered saline (without Mg<sup>2+</sup> and Ca<sup>2+</sup>), pH 7.4, 150mM NaCl, 0.02% sodium azide and 50% glycerol.

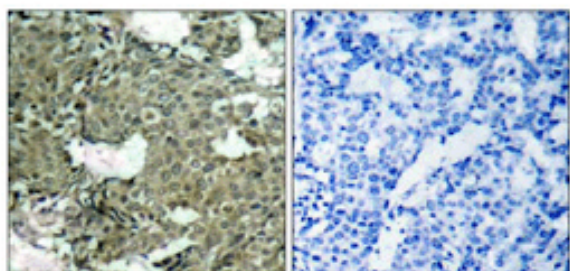
**Raised In:** Rabbit

**Purity :** The antibody was affinity-purified from rabbit antiserum by affinity-chromatography using epitope-specific phosphopeptide. The antibody against non-phosphopeptide was removed by chromatography using non-phosphopeptide corresponding to the phosphorylation site.

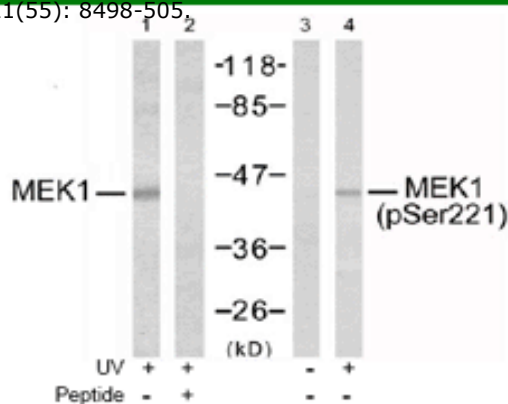
**Storage buffer:** WB: 1:500~1:1000 IHC: 1:50~1:100

**Form:** Liquid

**References:** Zebisch A, et al. (2006) Cancer Res; 66(7): 3401-8. Luciano BS, et al.(2006) J Biol Chem; 279(50): 52117-23. Wang X, et al. (2003) Oncogene; 22(1): 109-16. Gopalbhai K, et al. (2003) J Biol Chem; 278(10): 8118-25. Ling M, et al. (2002) Oncogene; 21(55): 8498-505.



Immunohistochemical analysis of paraffin-embedded breast carcinoma tissue using MEK1 (phospho-Ser221) antibody (Y011161).



Western blot analysis of extracts from Jurkat cells, using MEK1 (Ab-221) antibody (Y021175, Lane 1 and 2) and MEK1 (phospho-Ser221) antibody (Y011161, Lane 3 and 4).

**For research use only**

Antagene, Inc. Toll Free: 1-866-964-2589, Fax: 1-888-225-1868, [info@antageneinc.com](mailto:info@antageneinc.com),  
[www.antageneinc.com](http://www.antageneinc.com)