



VASP (Phospho-Ser238) Antibody

Cat. #: ANTY011158

Species: Human, Mouse, Rat

Quantity: 100ug

Concentration: 100ug/100ul

Storage and Stability: Store at -20°C/1 year

Immunogen: The antiserum was produced against synthesized phosphopeptide derived from human VASP around the phosphorylation site of serine 238 (K-V-SP-K-Q).

Specificity: VASP (phospho-Ser238) antibody detects endogenous levels of VASP only when phosphorylated at serine 238.

Tested Application: WB and IHC

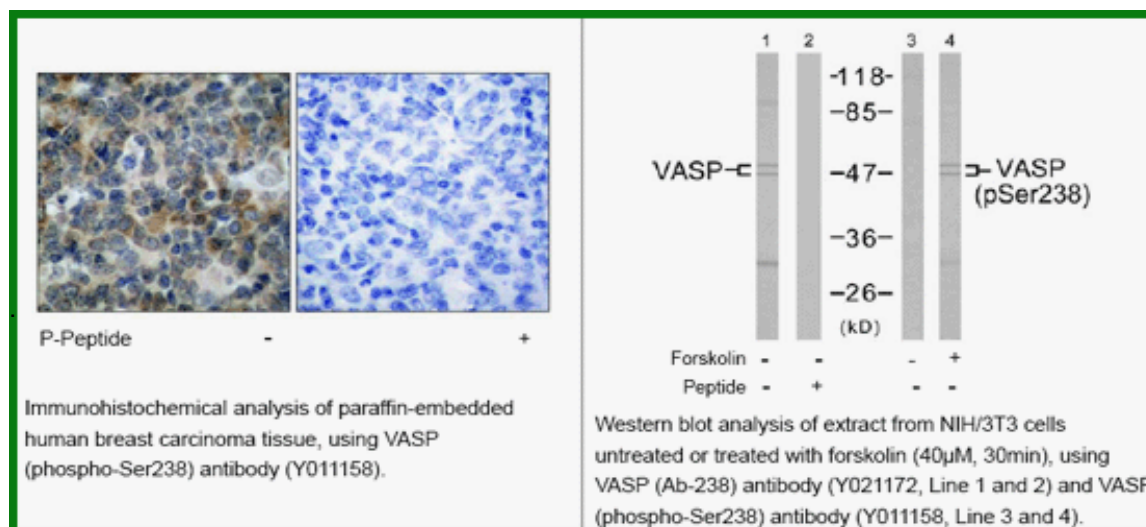
Application Notes : Rabbit IgG in phosphate buffered saline (without Mg²⁺ and Ca²⁺), pH 7.4, 150mM NaCl, 0.02% sodium azide and 50% glycerol.

Raised In: Rabbit

Purity: The antibody was affinity-purified from rabbit antiserum by affinity-chromatography using epitope-specific phosphopeptide. The antibody against non-phosphopeptide was removed by chromatography using non-phosphopeptide corresponding to the phosphorylation site.

Storage Buffer: WB: 1:500~1:1000 IHC: 1:50~1:100

Reference: Zhao WM, et al. (2001) EMBO J; 20(9): 2315-2325 Millard TH, et al. (2005) EMBO J; 24(2): 240-250 Kühnel K, et al. (2004) Proc Natl Acad Sci U S A; 101(49): 17027-17032 Haffner C, et al. (1995) EMBO J; 14(1): 19-27 Ramesh N, et al. (1997) Proc Natl Acad Sci U S A; 94(26): 14671-14676



For research use only

Antagene, Inc. Toll Free: 1-866-964-2589, Fax: 1-888-225-1868, info@antageneinc.com,
www.antageneinc.com