



FKHRL1 (Phospho-Ser253) Antibody

Cat. #: ANT011157

Species: Human, Mouse, Rat

Quantity: 100ug

Concentration: 100ug/100ul

Storage and Stability: Store at -20°C/1 year

Immunogen: The antiserum was produced against synthesized phosphopeptide derived from human FKHRL1 around the phosphorylation site of serine 253 (A-V-SP-M-D).

Specificity: FKHRL1 (phospho-Ser253) antibody detects endogenous levels of FKHRL1 only when phosphorylated at serine 253.

Tested Application: WB and IHC

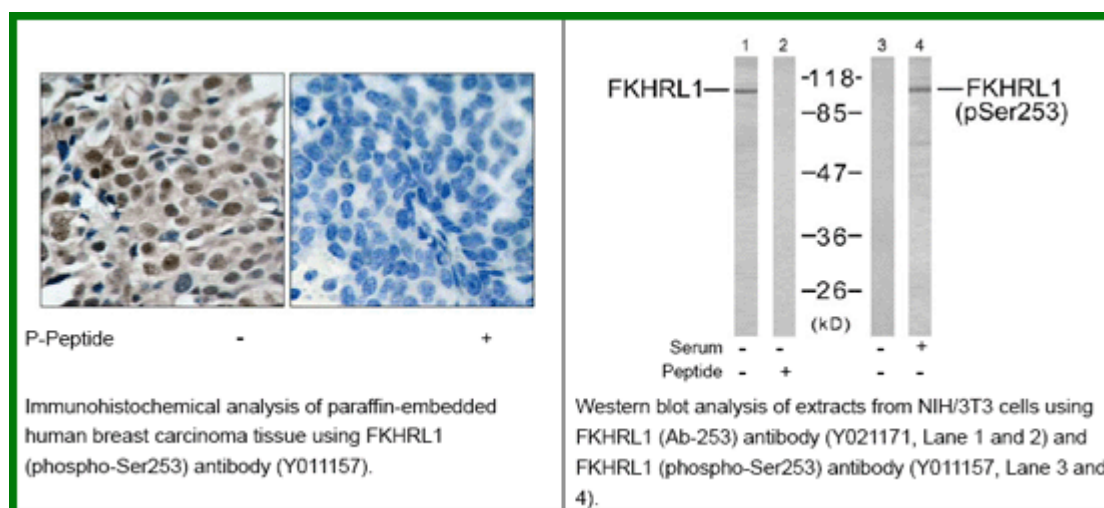
Application Notes : Rabbit IgG in phosphate buffered saline (without Mg²⁺ and Ca²⁺), pH 7.4, 150mM NaCl, 0.02% sodium azide and 50% glycerol.

Raised In: Rabbit

Purity: The antibody was affinity-purified from rabbit antiserum by affinity-chromatography using epitope-specific phosphopeptide. The antibody against non-phosphopeptide was removed by chromatography using non-phosphopeptide corresponding to the phosphorylation site.

Storage Buffer: WB: 1:500~1:1000 IHC: 1:50-1:100

Reference: Smith WW, et al. (2005) J Cell Biol; 169(2): 331-9. Essafi A, et al. (2005) Oncogene; 24(14): 2317-29. Brunet A, et al. (2001) Mol Cell Biol; 21(3): 952-65. Brunet A, et al. (1999) Cell; 96(6): 857-68.



For research use only

Antagene, Inc. Toll Free: 1-866-964-2589, Fax: 1-888-225-1868, info@antageneinc.com,
www.antageneinc.com