



## PAK1 (Phospho-Thr212) Antibody

**Cat. #:** ANTY011154

**Species:** Human, Mouse, Rat

**Quantity:** 100ug

**Concentration:** 100ug/100ul

**Storage and Stability:** Store at -20°C/1 year

**Immunogen:** The antiserum was produced against synthesized phosphopeptide derived from human PAK1 around the phosphorylation site of threonine 212 (P-V-TP-P-T).

**Specificity:** PAK1 (phospho-Thr212) antibody detects endogenous levels of PAK1 only when phosphorylated at threonine 212.

**Tested Application:** WB and IHC

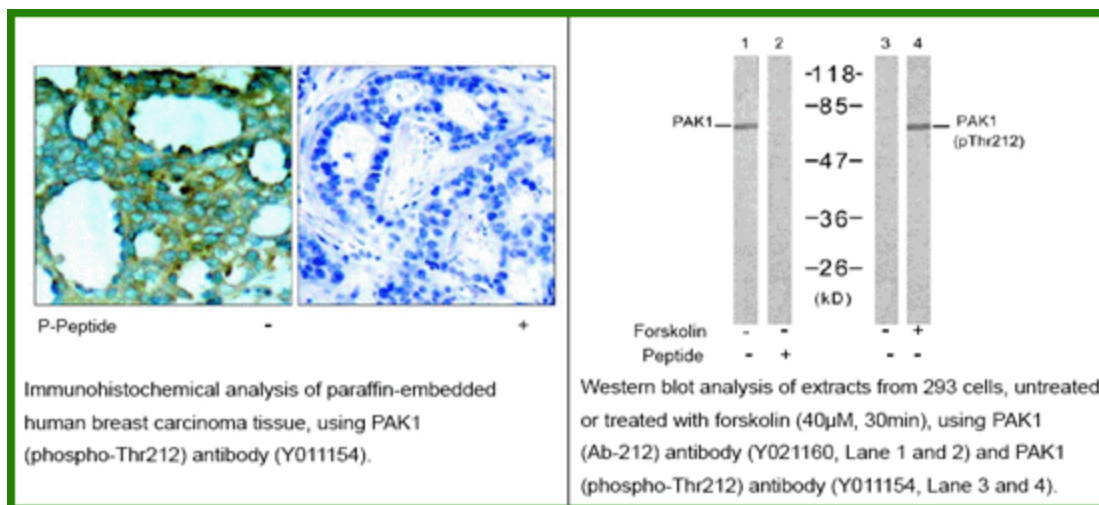
**Application Notes :** Rabbit IgG in phosphate buffered saline (without Mg<sup>2+</sup> and Ca<sup>2+</sup>), pH 7.4, 150mM NaCl, 0.02% sodium azide and 50% glycerol.

**Raised In:** Rabbit

**Purity:** The antibody was affinity-purified from rabbit antiserum by affinity-chromatography using epitope-specific phosphopeptide. The antibody against non-phosphopeptide was removed by chromatography using non-phosphopeptide corresponding to the phosphorylation.

**Storage Buffer:** WB: 1:500~1:1000 IHC: 1:50-1:100

**Reference:** Alexander K, et al. (2004) Mol Cell Biol; 24: 2808-2819 Thiel DA, et al. (2002) Curr Biol; 12:1227-1232 Rashid T, et al. (2001) J. Biol. Chem; 276: 49043 - 49052.



**For research use only**

Antagene, Inc. Toll Free: 1-866-964-2589, Fax: 1-888-225-1868, [info@antageneinc.com](mailto:info@antageneinc.com),  
[www.antageneinc.com](http://www.antageneinc.com)