



Src(Phospho-Tyr529)Antibody

Cat. #: ANTY011153

Species: Human, Mouse, Rat

Quantity: 100ug

Concentration: 100ug/100ul

Storage and Stability: Store at -20°C/1 year

Immunogen: The antiserum was produced against synthesized phosphopeptide derived from human Src around the phosphorylation site of tyrosine 529 (P-Q-YP-Q-P).

Specificity: Src (phospho-Tyr529) antibody detects endogenous levels of Src only when phosphorylated at tyrosine 529.

Tested Application: WB and IHC

Application Notes : Rabbit IgG in phosphate buffered saline (without Mg²⁺ and Ca²⁺), pH 7.4, 150mM NaCl, 0.02% sodium azide and 50% glycerol.

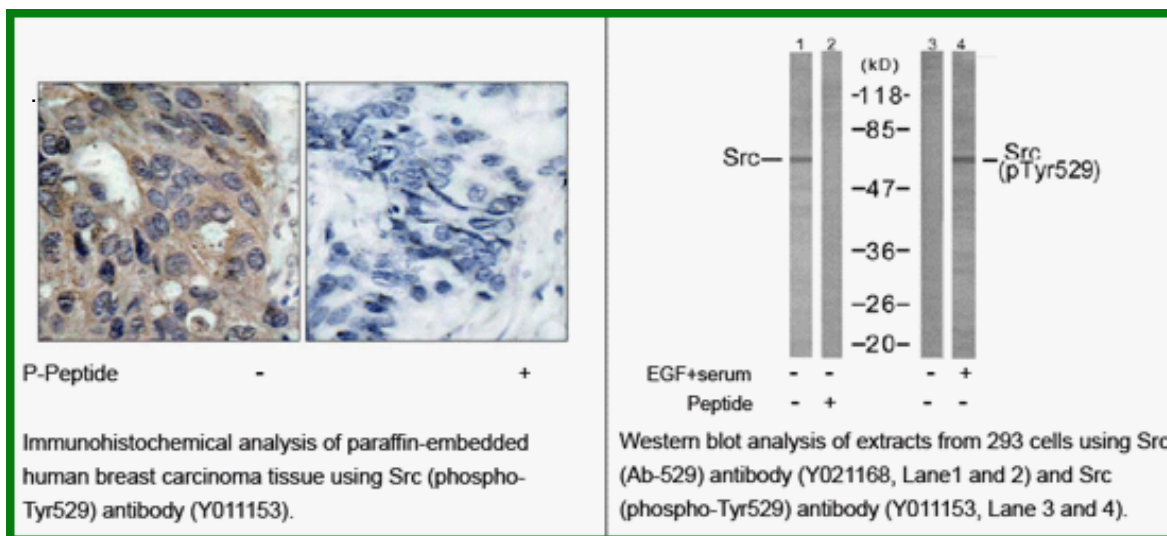
Raised In: Rabbit

Purity: The antibody was affinity-purified from rabbit antiserum by affinity-chromatography using epitope-specific phosphopeptide. The antibody against non-phosphopeptide was removed by chromatography using non-phosphopeptide corresponding to the phosphorylation site.

Storage buffer: WB: 1:500~1:1000 IHC: 1:50~1:100

Form: Liquid

Reference: Pyper J.M., (1985) Mol. Cell. Biol. 5:831-838 Pyper J.M.(1990) Mol. Cell. Biol. 10:2035-2040 Xu W., (1997).Nature 385:595-602 Benes C.H., (2005) Cell 121:271-280



For research use only

Antagene, Inc. Toll Free: 1-866-964-2589, Fax: 1-888-225-1868, info@antageneinc.com,
www.antageneinc.com