



IκB-α (Phospho-Ser32/Ser36) Antibody

Cat. #: ANTY011152

Species: Human, Mouse, Rat

Quantity: 100ug

Concentration: 100ug/100ul

Storage and Stability: Store at -20°C/1 year

Immunogen: The antiserum was produced against synthesized phosphopeptide derived from human IκB-α around the phosphorylation site of serine 32/36 (H-D-SP-G-L-D-SP -M-K).

Specificity: IκB-α (phospho-Ser32/Ser36) antibody detects endogenous levels of IκB-α only when phosphorylated at serine 32/36.

Tested Application: IHC

Application Notes : Rabbit IgG in phosphate buffered saline (without Mg²⁺ and Ca²⁺), pH 7.4, 150mM NaCl, 0.02% sodium azide and 50% glycerol.

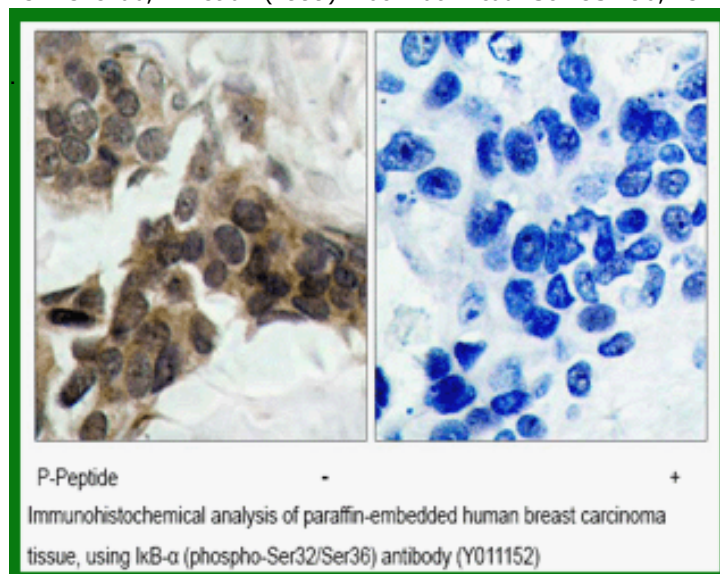
Raised In: Rabbit

Purity: The antibody was affinity-purified from rabbit antiserum by affinity-chromatography using epitope-specific phosphopeptide. The antibody against non-phosphopeptide was removed by chromatography using non-phosphopeptide corresponding to the phosphorylation site.

Storage buffer: IHC: 1:50~1:100

Form: Liquid

Reference: Shieh, S. Y. et al. (1999) EMBO J. 18, 1815-1823. Honda, R. et al. (1997) FEBS Lett. 420, 25-27. Hirao, A. et al. (2000) Science 287, 1824-1827. Tibbetts, R. S. et al. (1999) Genes Dev. 13, 152-157. Chehab, N.H. et al. (1999) Proc. Natl. Acad. Sci. USA 96, 13777-13782.



For research use only

Antagene, Inc. Toll Free: 1-866-964-2589, Fax: 1-888-225-1868, info@antageneinc.com,
www.antageneinc.com