



MKK6 (Phospho-Ser207) Antibody

Cat. #: ANTY011146

Species: Human, Mouse and Rat

Quantity: 100ug

Concentration: 100ug/100ul

Storage and Stability: Store at -20°C/1 year

Immunogen: The antiserum was produced against synthesized phosphopeptide derived from human MKK6 around the phosphorylation site of serine 207 (V-D-SP-V-A).

Specificity: MKK6 (phospho-Ser207) antibody detects endogenous levels of MKK6 only when phosphorylated at serine207.

Tested Application: WB and IHC

Application Notes Rabbit IgG in phosphate buffered saline (without Mg²⁺ and Ca²⁺), pH 7.4, 150mM NaCl, 0.02% sodium azide and 50% glycerol.

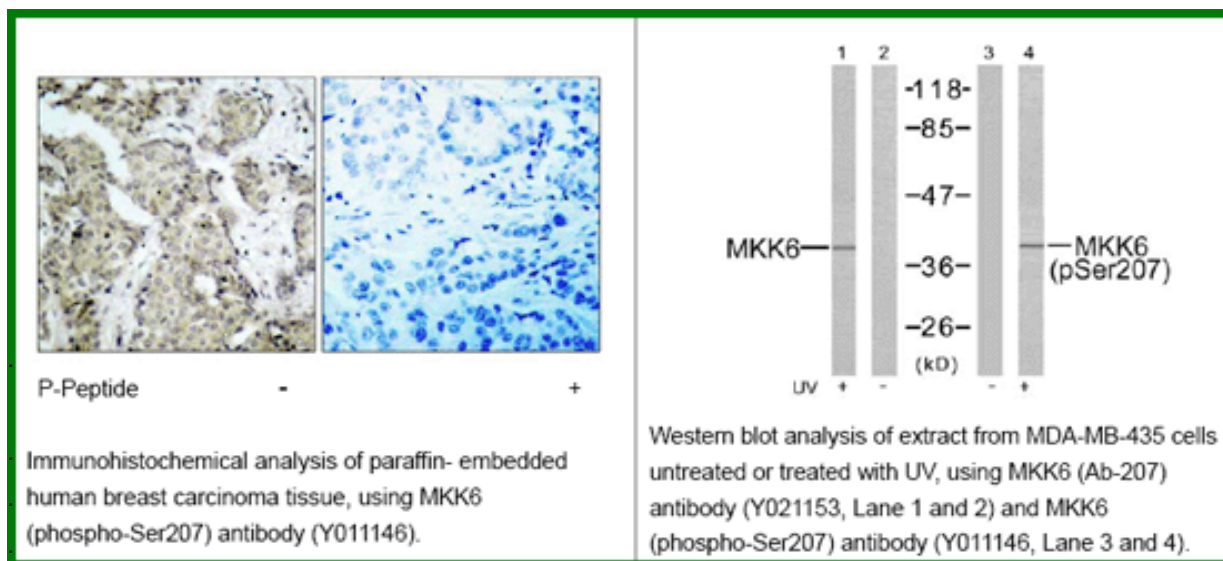
Raised In: Rabbit

Purity: The antibody was affinity-purified from rabbit antiserum by affinity-chromatography using epitope-specific phosphopeptide. The antibody against non-phosphopeptide was removed by chromatography using non-phosphopeptide corresponding to the phosphorylation site.

Storage buffer: WB: 1:500~1:1000 IHC: 1:50~1:100

Form: Liquid

Reference: Wang W, et al. (2002) Mol Cell Biol ; 22(10): 3389-403. Raingeaud J, et al. (1996) Mol Cell Biol; 16(3): 1247-55.



For research use only

Antagene, Inc. Toll Free: 1-866-964-2589, Fax: 1-888-225-1868, info@antageneinc.com,
www.antageneinc.com