



## MKK3 (Phospho-Ser189) Antibody

**Cat. #:** ANTY011145

**Species:** Human, Mouse and Rat

**Quantity:** 100ug

**Concentration:** 100ug/100ul

**Storage and Stability:** Store at -20°C/1 year

**Immunogen:** The antiserum was produced against synthesized phosphopeptide derived from human MKK3 around the phosphorylation site of serine 189 (V-D-SP-V-A).

**Specificity:** MKK3 (phospho-Ser189) Antibody detects endogenous levels of MKK3 only when phosphorylated at serine189.

**Tested Application:** WB and IHC

**Application Notes :** Rabbit IgG in phosphate buffered saline (without Mg<sup>2+</sup> and Ca<sup>2+</sup>), pH 7.4, 150mM NaCl, 0.02% sodium azide and 50% glycerol.

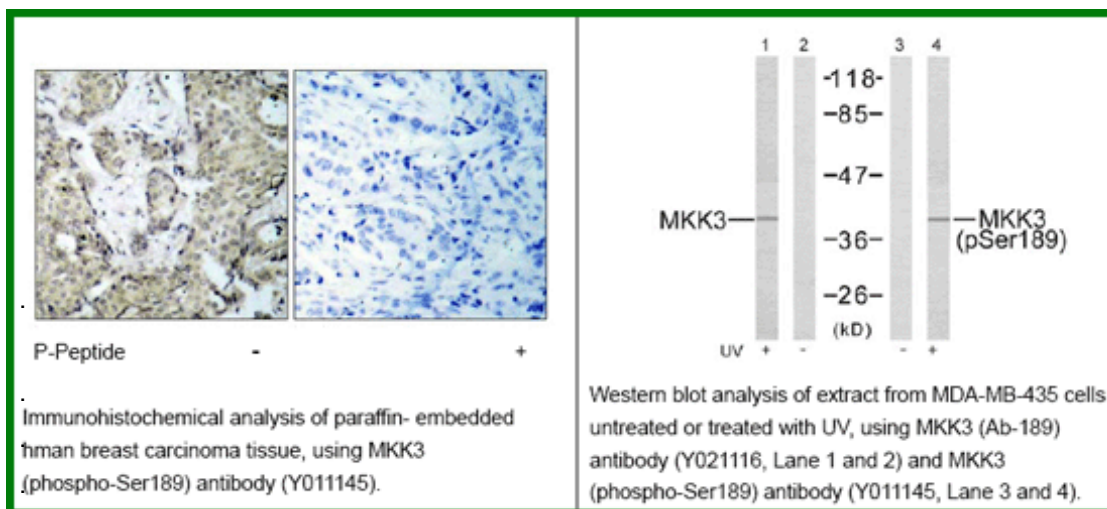
**Raised In:** Rabbit

**Purity:** The antibody was affinity-purified from rabbit antiserum by affinity-chromatography using epitope-specific phosphopeptide. The antibody against non-phosphopeptide was removed by chromatography using non-phosphopeptide corresponding to the phosphorylation site.

**Storage buffer:** WB: 1:500~1:1000 IHC: 1:50~1:100

**Form:** Liquid

**Reference:** Wang W, et al. (2002) Mol Cell Biol ; 22(10): 3389-403. Raingeaud J, et al. (1996) Mol Cell Biol; 16(3): 1247-55.



**For research use only**

Antagene, Inc. Toll Free: 1-866-964-2589, Fax: 1-888-225-1868, [info@antageneinc.com](mailto:info@antageneinc.com),  
[www.antageneinc.com](http://www.antageneinc.com)