



## Lck (Phospho-Tyr393) Antibody

**Cat. #:** ANTY011144

**Species:** Human, Mouse and Rat

**Quantity:** 100ug

**Concentration:** 100ug/100ul

**Storage and Stability:** Store at -20°C/1 year

**Immunogen:** The antiserum was produced against synthesized phosphopeptide derived from human Lck around the phosphorylation site of tyrosine 393 (N-E-YP-T-A).

**Specificity:** Lck (phospho-Tyr393) antibody detects endogenous levels of Lck only when phosphorylated at tyrosine 393.

**Tested Application:** WB

**Application Notes:** Rabbit IgG in phosphate buffered saline (without Mg<sup>2+</sup> and Ca<sup>2+</sup>), pH 7.4, 150mM NaCl, 0.02% sodium azide and 50% glycerol.

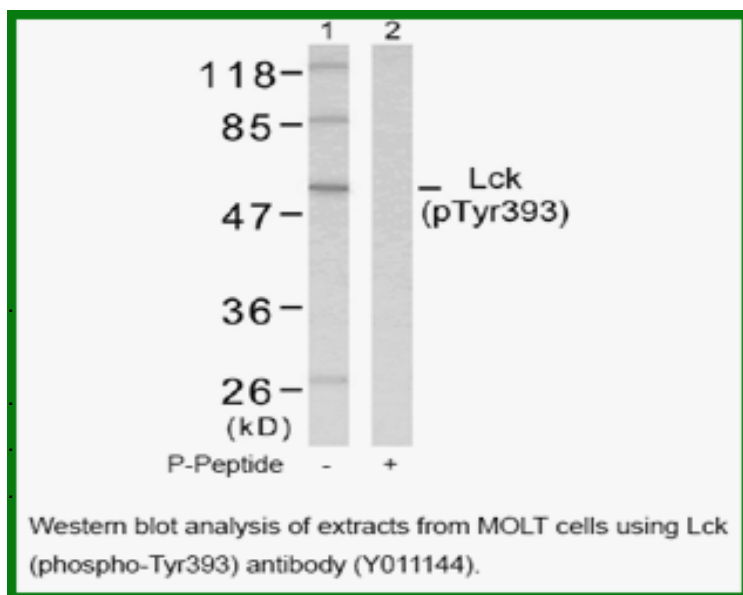
**Raised In:** Rabbit

**Purity:** The antibody was affinity-purified from rabbit antiserum by affinity-chromatography using epitope-specific phosphopeptide. The antibody against non-phosphopeptide was removed by chromatography using non-phosphopeptide corresponding to the phosphorylation site.

**Storage buffer:** WB: 1:500~1:1000

**Form:** Liquid

**Reference:** Heck E, et al. (2006) J Virol. Oct; 80(20): 9934-9942 Michie AM, et al. (2000) Mol Biol Cell. May; 11(5): 1585-1595



**For research use only**

Antagene, Inc. Toll Free: 1-866-964-2589, Fax: 1-888-225-1868, [info@antageneinc.com](mailto:info@antageneinc.com),  
[www.antageneinc.com](http://www.antageneinc.com)