



## Cofilin (Phospho-Ser3) Antibody

**Cat. #:** ANTY011139

**Species:** Human, Mouse and Rat

**Quantity:** 100ug

**Concentration:** 100ug/100ul

**Storage and Stability:** Store at -20°C/1 year

**Immunogen:** The antiserum was produced against synthesized phosphopeptide derived from human cofilin around the phosphorylation site of serine 3 (M-A-SP-G-V).  
75 (M-G-SP-S-E).

**Specificity:** cofilin (phospho-Ser3) antibody detects endogenous levels of cofilin only when phosphorylated at serine 3.

**Tested Application:** WB

**Application Notes :** Rabbit IgG in phosphate buffered saline (without Mg<sup>2+</sup> and Ca<sup>2+</sup>), pH 7.4, 150mM NaCl, 0.02% sodium azide and 50% glycerol.

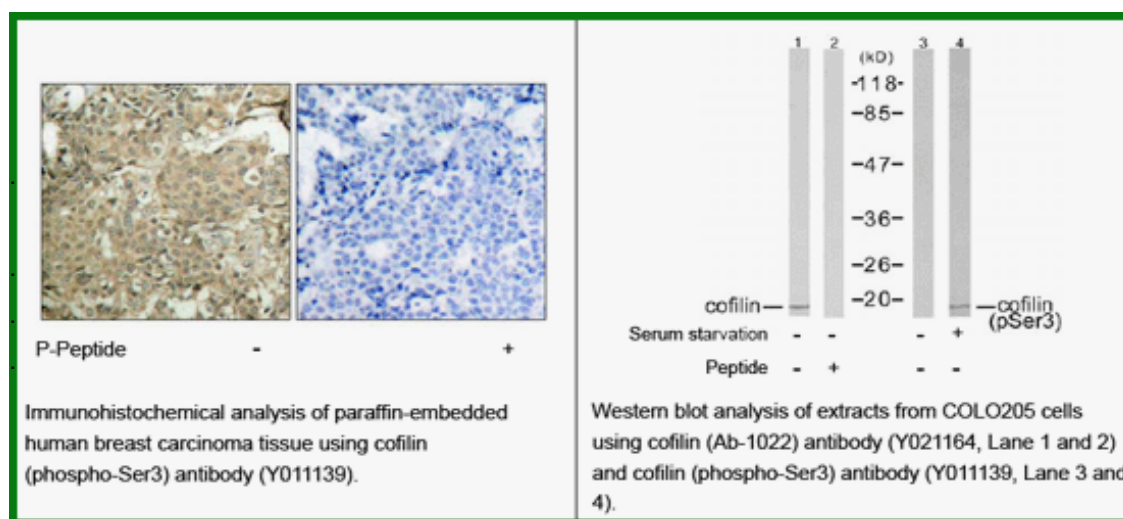
**Raised In:** Rabbit

**Purity:** The antibody was affinity-purified from rabbit antiserum by affinity-chromatography using epitope-specific phosphopeptide. The antibody against non-phosphopeptide was removed by chromatography using non-phosphopeptide corresponding to the phosphorylation site.

**Storage buffer:** WB: 1:500~1:1000 IHC: 1:50~1:100

**Form:** Liquid

**References :** Kobayashi M, et al. (2006) EMBO J 25(4): 713-26. Wang Y, et al. (2005) Biol Chem 280(13): 12683-9. Smith-Beckerman DM, et al. (2005) Mol Cell Proteomics: 156-68.



**For research use only**

Antagene, Inc. Toll Free: 1-866-964-2589, Fax: 1-888-225-1868, [info@antageneinc.com](mailto:info@antageneinc.com),  
[www.antageneinc.com](http://www.antageneinc.com)