



## **cdc25A (Phospho-Ser75) Antibody**

**Cat. #:** ANTY011138

**Species:** Human, Mouse and Rat

**Quantity:** 100ug

**Concentration:** 100ug/100ul

**Storage and Stability:** Store at -20°C/1 year

**Immunogen:** The antiserum was produced against synthesized phosphopeptide derived from human cdc25A around the phosphorylation site of serine 75 (M-G-SP-S-E).

**Specificity:** cdc25A (phospho-Ser75) antibody detects endogenous levels of cdc25A only when phosphorylated at serine 75.

**Tested Application:** WB

**Application Notes :** Rabbit IgG in phosphate buffered saline (without Mg<sup>2+</sup> and Ca<sup>2+</sup>), pH 7.4, 150mM NaCl, 0.02% sodium azide and 50% glycerol.

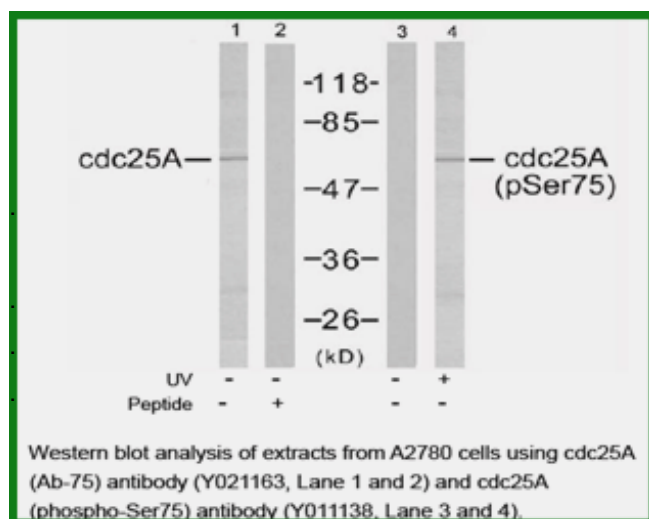
**Raised In:** Rabbit

**Purity:** The antibody was affinity-purified from rabbit antiserum by affinity-chromatography using epitope-specific phosphopeptide. The antibody against non-phosphopeptide was removed by chromatography using non-phosphopeptide corresponding to the phosphorylation site.

**Storage buffer:** WB: 1:500~1:1000

**Form:** Liquid

**References :** Jin J, et al. (2003) Genes 17(24): 3062-74. Shimuta K, et al. (2002) EMBO J 21(14): 3694-703.



**For research use only**

Antagene, Inc. Toll Free: 1-866-964-2589, Fax: 1-888-225-1868, [info@antageneinc.com](mailto:info@antageneinc.com),  
[www.antageneinc.com](http://www.antageneinc.com)