



FKHR (Phospho-Ser319) Antibody

Cat. #: ANTY011136

Species: Human, Mouse and Rat

Quantity: 100ug

Concentration: 100ug/100ul

Storage and Stability: Store at -20°C/1 year

Immunogen: The antiserum was produced against synthesized phosphopeptide derived from human FKHR around the phosphorylation site of serine 319 (T-S-SP-N-A).

Specificity: FKHR (phospho-Ser319) antibody detects endogenous levels of FKHR only when phosphorylated at serine 319.

Tested Application: WB, IHC

Application Notes: Rabbit IgG in phosphate buffered saline (without Mg²⁺ and Ca²⁺), pH 7.4, 150mM NaCl, 0.02% sodium azide and 50% glycerol.

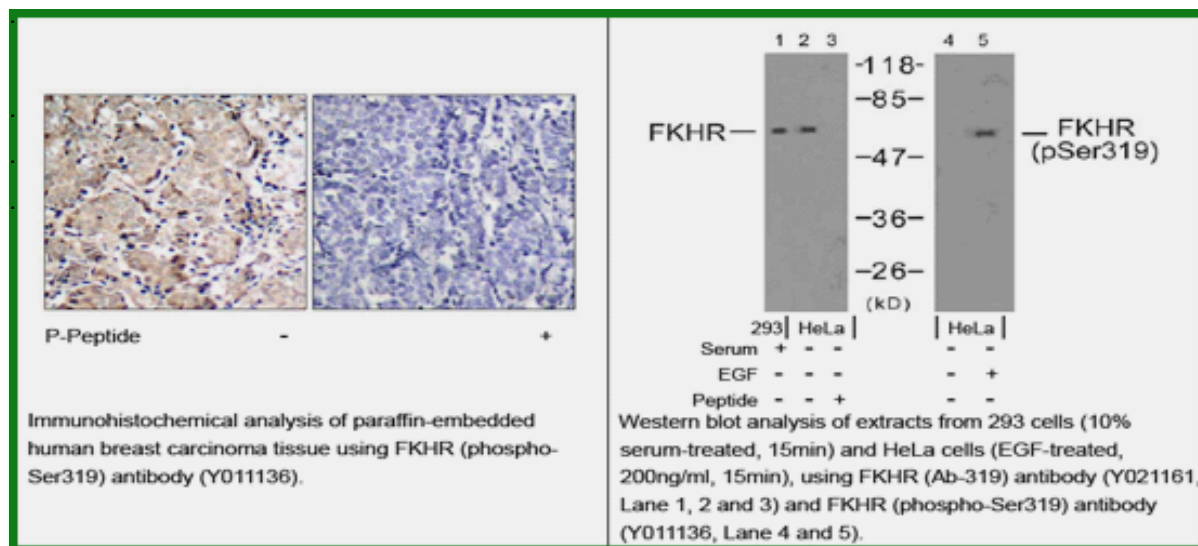
Raised In: Rabbit

Purity: The antibody was affinity-purified from rabbit antiserum by affinity-chromatography using epitope-specific phosphopeptide. The antibody against non-phosphopeptide was removed by chromatography using non-phosphopeptide corresponding to the phosphorylation site.

Storage buffer: WB: 1:500~1:1000 IHC: 1:50~1:100

Form: Liquid

References : Rena G, et al. (2002) EMBO J 21(9): 2263-2271. Woods YL, et al. (2001) Biochem J 355(Pt 3): 597-607. Rena G, et al. (2001) Biochem J 354(Pt 3): 605-612.



For research use only

Antagene, Inc. Toll Free: 1-866-964-2589, Fax: 1-888-225-1868, info@antageneinc.com,
www.antageneinc.com