



CDK2 (Phospho-Thr160) Antibody

Cat. #: ANT011133

Species: Human, Mouse and Rat

Quantity: 100ug

Concentration: 100ug/100ul

Storage and Stability: Store at -20°C/1 year

Immunogen: The antiserum was produced against synthesized phosphopeptide derived from human CDK2 around the phosphorylation site of threonine 160 (T-Y-TP-H-E).

Specificity: CDK2 (phospho-Thr160) antibody detects endogenous levels of CDK2 only when phosphorylated at threonine 160.

Tested Application: WB, IHC and ELISA

Application Notes : Rabbit IgG in phosphate buffered saline (without Mg²⁺ and Ca²⁺), pH 7.4, 150mM NaCl, 0.02% sodium azide and 50% glycerol.

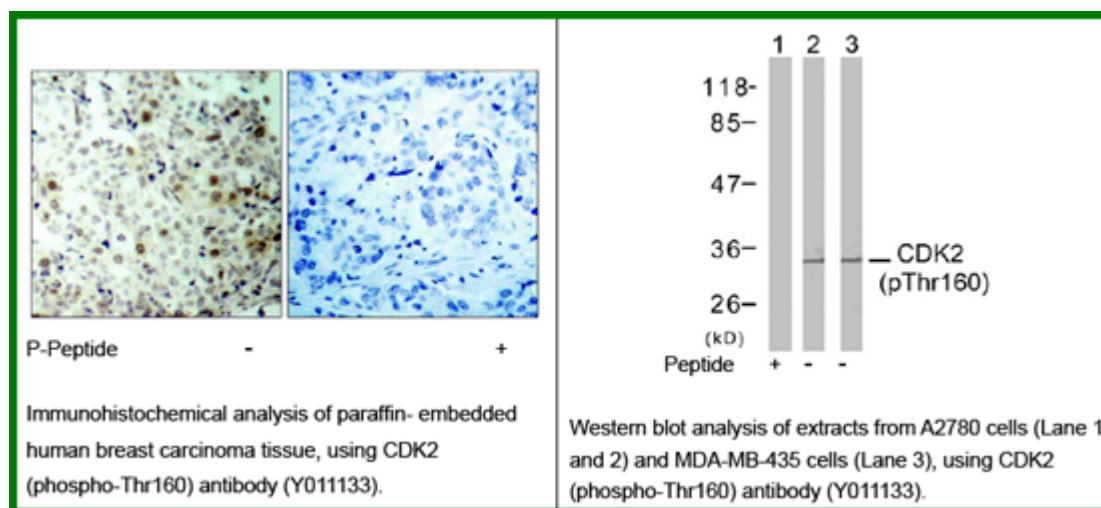
Raised In: Rabbit

Purity: The antibody was affinity-purified from rabbit antiserum by affinity-chromatography using epitope-specific phosphopeptide. The antibody against non-phosphopeptide was removed by chromatography using non-phosphopeptide corresponding to the phosphorylation site.

Storage buffer: WB: 1:500~1:1000 IHC: 1:50~1:100 ELISA: 1:4000

Form: Liquid

References : Ukomadu C, et al.(2003) J Biol Chem; 278(7): 4840-6. Morris MC, et al.(2002)J Biol Chem; 277(26): 23847-53. Brown NR, et al.(1999)J Biol Chem; 274(13): 8746-56. Liu Y, et al.(2004) J Biol Chem; 279(6): 4507-14.



For research use only

Antagene, Inc. Toll Free: 1-866-964-2589, Fax: 1-888-225-1868, info@antageneinc.com,
www.antageneinc.com