



## Rb (Phospho-Ser780) Antibody

**Cat. #:** ANTY011132

**Species:** Human, Mouse and Rat

**Quantity:** 100ug

**Concentration:** 100ug/100ul

**Storage and Stability:** Store at -20°C/1 year

**Immunogen:** The antiserum was produced against synthesized phosphopeptide derived from human Rb around the phosphorylation site of serine 780 (T-L-SP-P-I).

**Specificity:** Rb (phospho-Ser780) antibody detects endogenous levels of Rb only when phosphorylated at serine 780.

**Tested Application:** WB and IHC

**Application Notes :** Rabbit IgG in phosphate buffered saline (without Mg<sup>2+</sup> and Ca<sup>2+</sup>), pH 7.4, 150mM NaCl, 0.02% sodium azide and 50% glycerol.

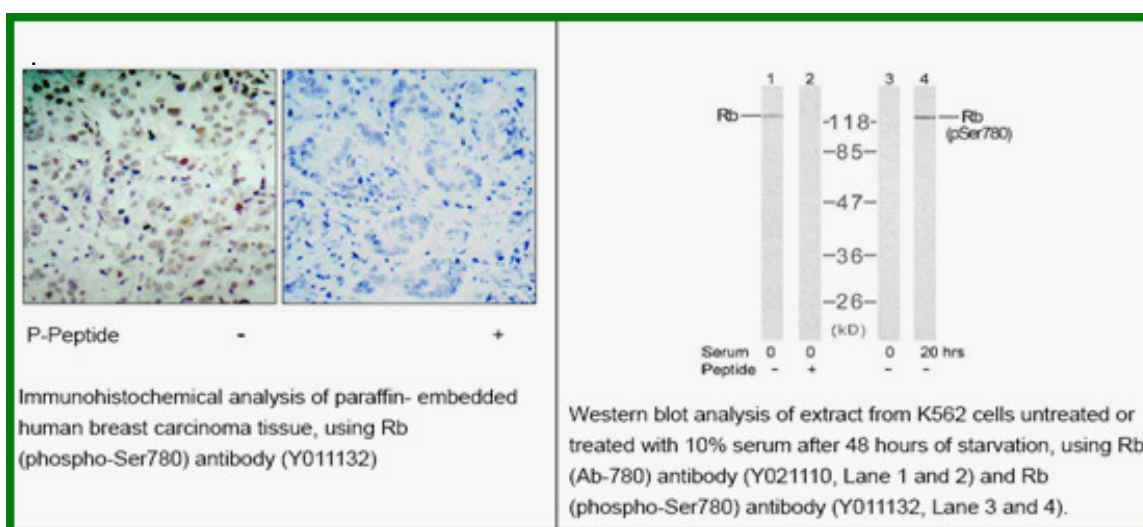
**Raised In:** Rabbit

**Purity:** The antibody was affinity-purified from rabbit antiserum by affinity-chromatography using epitope-specific phosphopeptide. The antibody against non-phosphopeptide was removed by chromatography using non-phosphopeptide corresponding to the phosphorylation site.

**Storage buffer:** WB: 1:500~1:1000 IHC: 1:50~1:100

**Form:** Liquid

**References** Roesch A, et al.(2005) Mod Pathol. 18(4): 565-572. Huang H, et al.(2004)Oncogene. 23(12): 2161-2176. Kitagawa M, et al.(1996)EMBO J. 15(24): 7060-7069.



**For research use only**

Antagene, Inc. Toll Free: 1-866-964-2589, Fax: 1-888-225-1868, [info@antageneinc.com](mailto:info@antageneinc.com),  
[www.antageneinc.com](http://www.antageneinc.com)