



Rb (Phospho-Ser807) Antibody

Cat. #: ANT011131

Species: Human, Mouse and Rat

Quantity: 100ug

Concentration: 100ug/100ul

Storage and Stability: Store at -20°C/1 year

Immunogen: The antiserum was produced against synthesized phosphopeptide derived from human Rb around the phosphorylation site of serine 807 (Y-I-SP-P-L).

Specificity: Rb (phospho-Ser807) antibody detects endogenous levels of Rb only when phosphorylated at serine 807.

Tested Application: WB and IHC

Application Notes : Rabbit IgG in phosphate buffered saline (without Mg²⁺ and Ca²⁺), pH 7.4, 150mM NaCl, 0.02% sodium azide and 50% glycerol.

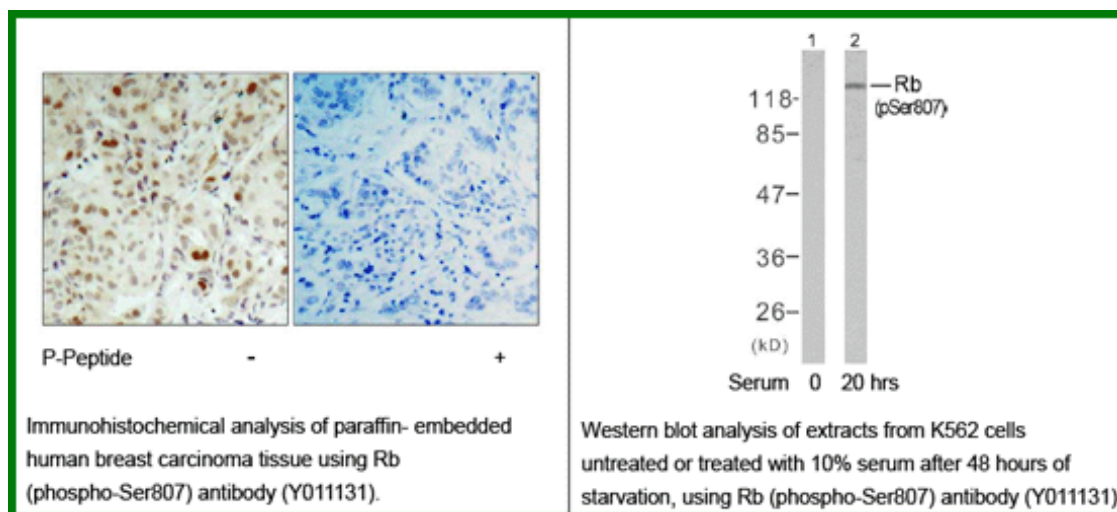
Raised In: Rabbit

Purity: The antibody was affinity-purified from rabbit antiserum by affinity-chromatography using epitope-specific phosphopeptide. The antibody against non-phosphopeptide was removed by chromatography using non-phosphopeptide corresponding to the phosphorylation site.

Storage buffer: WB: 1:500~1:1000 IHC: 1:50~1:100

Form: Liquid

References : Roesch A, et al. (2005) Mod Pathol. 18(4): 565-572. Chadee DN, et al. (2004) Nat Cell Biol. 6(8): 770-776. Knudsen ES, et al. (1997) Mol Cell Biol. 17(10): 5771-5783. Knudsen ES, et al. (1996) J Biol Chem. 271(14): 8313-8320.



For research use only

Antagene, Inc. Toll Free: 1-866-964-2589, Fax: 1-888-225-1868, info@antageneinc.com,
www.antageneinc.com