



## Rb (Phospho-Ser795) Antibody

**Cat. #:** ANTY011130

**Species:** Human, Mouse and Rat

**Quantity:** 100ug

**Concentration:** 100ug/100ul

**Storage and Stability:** Store at -20°C/1 year

**Immunogen:** The antiserum was produced against synthesized phosphopeptide derived from human Rb around the phosphorylation site of serine 795 (P-S-SP-P-L).

**Specificity:** Rb (phospho-Ser795) antibody detects endogenous levels of Rb only when phosphorylated at serine 795

**Tested Application:** WB and IHC

**Application Notes :** Rabbit IgG in phosphate buffered saline (without Mg<sup>2+</sup> and Ca<sup>2+</sup>), pH 7.4, 150mM NaCl, 0.02% sodium azide and 50% glycerol.

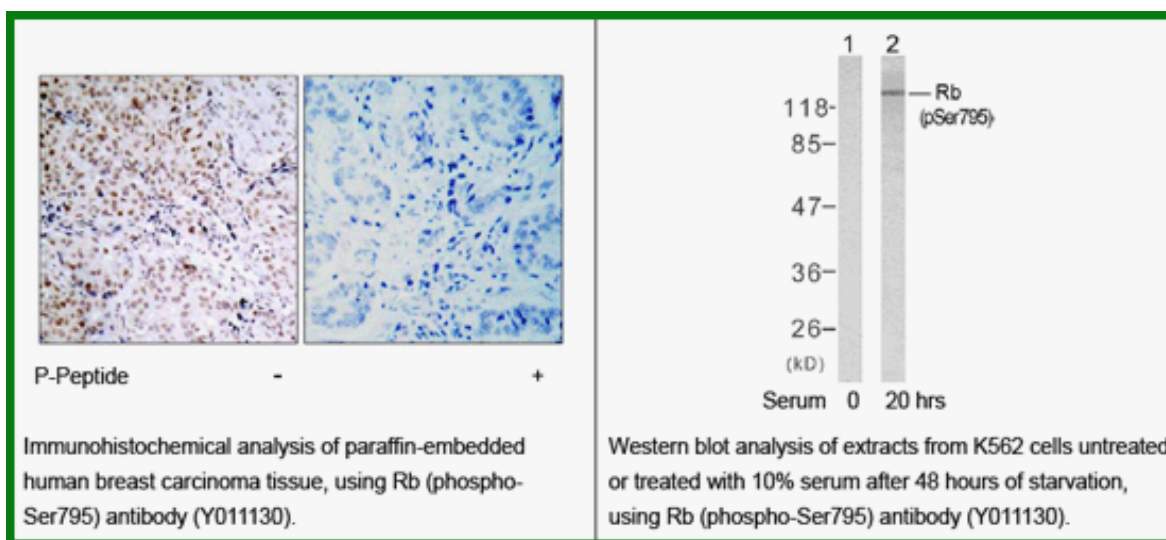
**Raised In:** Rabbit

**Purity:** The antibody was affinity-purified from rabbit antiserum by affinity-chromatography using epitope-specific phosphopeptide. The antibody against non-phosphopeptide was removed by chromatography using non-phosphopeptide corresponding to the phosphorylation site.

**Storage buffer:** WB: 1:500~1:1000 IHC: 1:50~1:100

**Form:** Liquid

**References :** Rubin SM, et al. (2005) Cell.123 (6): 1093-1106. Wallick CJ, et al. (2005) Oncogene.24 (36): 5606-5618. Leibundgut K, et al. (2005) Stem Cells. 23(7):1002-1011. Roesch A, et al. (2005) Mod Pathol.18 (4): 565-572.



**For research use only**

Antagene, Inc. Toll Free: 1-866-964-2589, Fax: 1-888-225-1868, [info@antageneinc.com](mailto:info@antageneinc.com),  
[www.antageneinc.com](http://www.antageneinc.com)