



HDAC8 (Phospho-Ser39) Antibody

Cat. #: ANTY011128

Species: Human, Mouse and Rat

Quantity: 100ug

Concentration: 100ug/100ul

Storage and Stability: Store at -20°C/1 year

Immunogen: The antiserum was produced against synthesized phosphopeptide derived from human HDAC8 around the phosphorylation site of serine 39 (R-A-SP-M-V).

Specificity: HDAC8 (phospho-Ser39) antibody detects endogenous levels of HDAC8 only when phosphorylated at serine 39.

Tested Application: IHC

Application Notes : Rabbit IgG in phosphate buffered saline (without Mg²⁺ and Ca²⁺), pH 7.4, 150mM NaCl, 0.02% sodium azide and 50% glycerol.

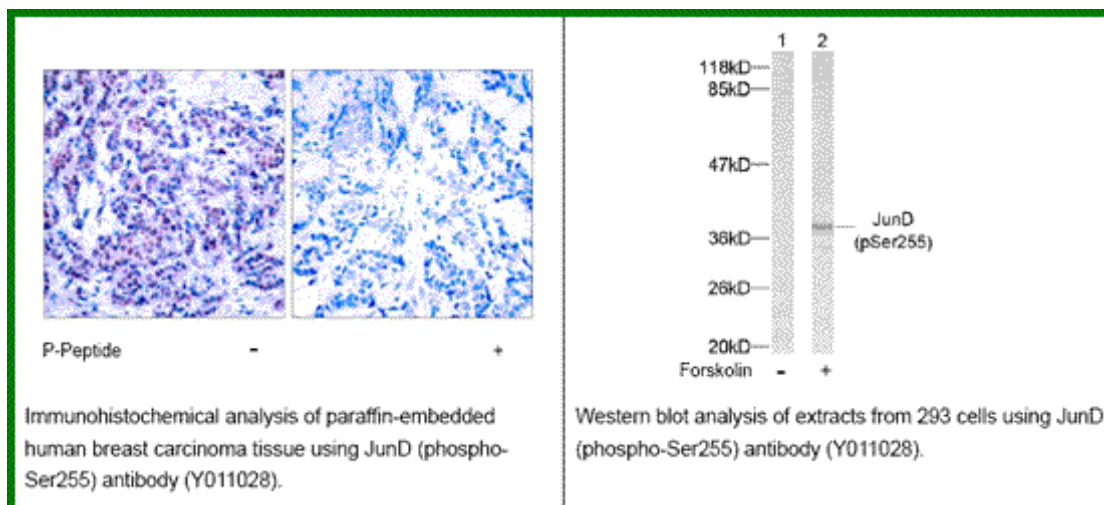
Raised In: Rabbit

Purity: The antibody was affinity-purified from rabbit antiserum by affinity-chromatography using epitope-specific phosphopeptide. The antibody against non-phosphopeptide was removed by chromatography using non-phosphopeptide corresponding to the phosphorylation site.

Storage buffer: IHC: 1:50~1:100

Form: Liquid

References : Lee H, et al. (2004) Mol Cell Biol. 24(2): 765-773.



For research use only

Antagene, Inc. Toll Free: 1-866-964-2589, Fax: 1-888-225-1868, info@antageneinc.com,
www.antageneinc.com