



LIMK2 (Phospho-Thr505) Antibody

Cat. #: ANTY011127

Species: Human, Mouse and Rat

Quantity: 100ug

Concentration: 100ug/100ul

Storage and Stability: Store at -20°C/1 year

Immunogen: The antiserum was produced against synthesized phosphopeptide derived from human LIMK2 around the phosphorylation site of threonine 505 (R-Y-TP-V-V).

Specificity: LIMK2 (phospho-Thr505) antibody detects endogenous levels of LIMK2 only when phosphorylated at threonine 505.

Tested Application: WB and IHC

Application Notes : Rabbit IgG in phosphate buffered saline (without Mg²⁺ and Ca²⁺), pH 7.4, 150mM NaCl, 0.02% sodium azide and 50% glycerol.

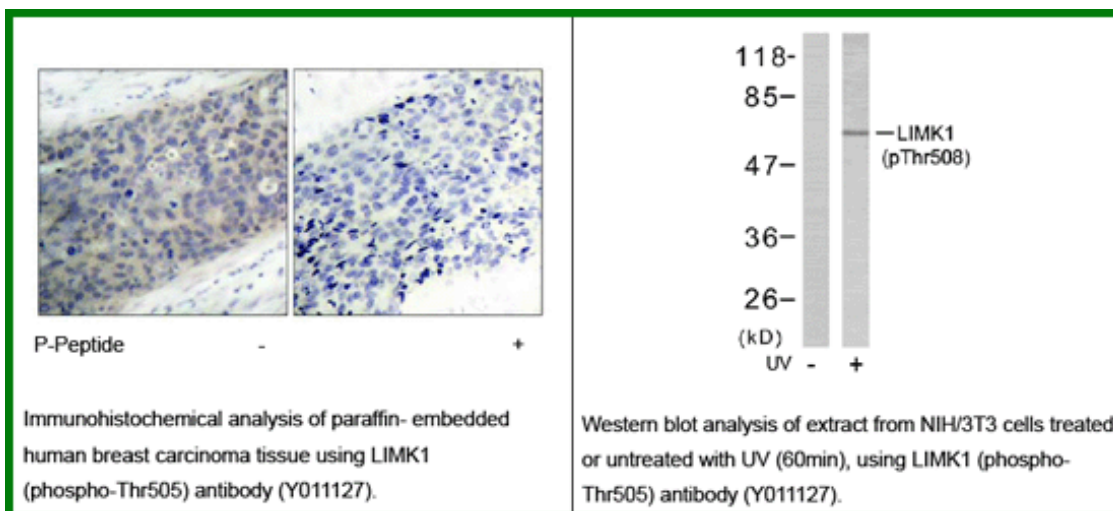
Raised In: Rabbit

Purity: The antibody was affinity-purified from rabbit antiserum by affinity-chromatography using epitope-specific phosphopeptide. The antibody against non-phosphopeptide was removed by chromatography using non-phosphopeptide corresponding to the phosphorylation site.

Storage buffer: WB: 1:500~1000 IHC: 1:50~1:100

Form: Liquid

References: Soosairajah J, et al. (2005) EMBO J. Ohashi K, et al. (2000) J Biol Chem; 275(5): 3577-82. Edwards DC, et al. (1999) Nat Cell Biol; 1(5): 253-9.



For research use only

Antagene, Inc. Toll Free: 1-866-964-2589, Fax: 1-888-225-1868, info@antageneinc.com,
www.antageneinc.com