



## LIMK1 (Phospho-Thr508) Antibody

**Cat. #:** ANTY011126

**Species:** Human, Mouse and Rat

**Quantity:** 100ug

**Concentration:** 100ug/100ul

**Storage and Stability:** Store at -20°C/1 year

**Immunogen:** The antiserum was produced against synthesized phosphopeptide derived from human LIMK1 around the phosphorylation site of threonine 508 (R-Y-TP-V-V).

**Specificity:** LIMK1 (phospho-Thr508) antibody detects endogenous levels of LIMK1 only when phosphorylated at threonine 508.

**Tested Application:** WB and IHC

**Application Notes :** Rabbit IgG in phosphate buffered saline (without Mg<sup>2+</sup> and Ca<sup>2+</sup>), pH 7.4, 150mM NaCl, 0.02% sodium azide and 50% glycerol.

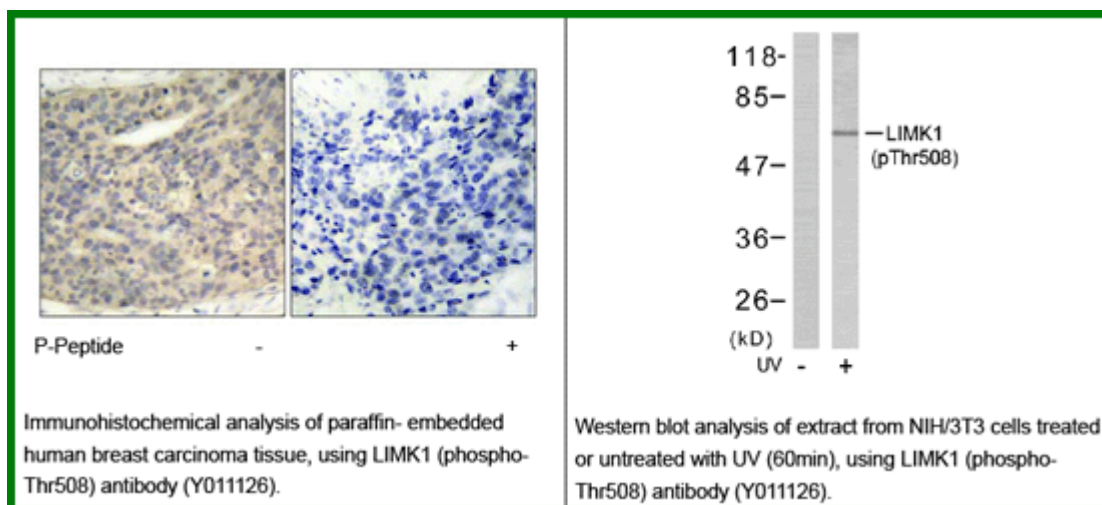
**Raised In:** Rabbit

**Purity:** The antibody was affinity-purified from rabbit antiserum by affinity-chromatography using epitope-specific phosphopeptide. The antibody against non-phosphopeptide was removed by chromatography using non-phosphopeptide corresponding to the phosphorylation site.

**Storage buffer:** WB: 1:500~1000 IHC: 1:50~1:100

**Form:** Liquid

**References:** Soosairajah J, et al. (2005) EMBO J. Ohashi K, et al. (2000) J Biol Chem; 275(5): 3577-82. Edwards DC, et al. (1999) Nat Cell Biol; 1(5): 253-9.



**For research use only**

Antagene, Inc. Toll Free: 1-866-964-2589, Fax: 1-888-225-1868, [info@antageneinc.com](mailto:info@antageneinc.com),  
[www.antageneinc.com](http://www.antageneinc.com)