



## c-Abl (Phospho-Tyr412) Antibody

**Cat. #:** ANTY011125

**Species:** Human, Mouse and Rat

**Quantity:** 100ug

**Concentration:** 100ug/100ul

**Storage and Stability:** Store at -20°C/1 year

**Immunogen:** The antiserum was produced against synthesized phosphopeptide derived from human c-Abl around the phosphorylation site of tyrosine 412 (D-T-YP-T-A).

**Specificity:** c-Abl (phospho-Tyr412) antibody detects endogenous levels of c-Abl only when phosphorylated at tyrosine 412.

**Tested Application:** IHC

**Application Notes:** Rabbit IgG in phosphate buffered saline (without Mg<sup>2+</sup> and Ca<sup>2+</sup>), pH 7.4, 150mM NaCl, 0.02% sodium azide and 50% glycerol.

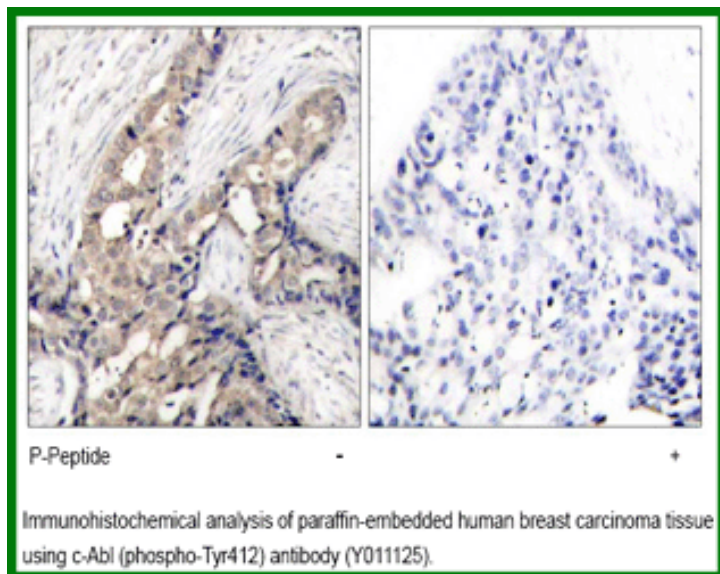
**Raised In:** Rabbit

**Purity:** The antibody was affinity-purified from rabbit antiserum by affinity-chromatography using epitope-specific phosphopeptide. The antibody against non-phosphopeptide was removed by chromatography using non-phosphopeptide corresponding to the phosphorylation site.

**Storage buffer:** IHC: 1:50~1:100

**Form:** Liquid

**References :** Kawai H, et al. (2002) Mol Cell Biol 22(17): 6079-6088. Vogt Sionov R, et al. (2001) Mol Cell Biol 21(17): 5869-5878. Kharbanda S, et al. (2000) Mol Cell Biol 20(14): 4979-4989. Yoshida K, et al. (2002) Mol Cell Biol 22(10): 3292-3300.



**For research use only**

Antagene, Inc. Toll Free: 1-866-964-2589, Fax: 1-888-225-1868, [info@antageneinc.com](mailto:info@antageneinc.com),  
[www.antageneinc.com](http://www.antageneinc.com)