



Akt2 (Phospho-Ser474) Antibody

Cat. #: ANTY011124

Species: Human, Mouse and Rat

Quantity: 100ug

Concentration: 100ug/100ul

Storage and Stability: Store at -20°C/1 year

Immunogen: The antiserum was produced against synthesized phosphopeptide derived from human Akt2 around the phosphorylation site of serine 474 (Q-F-SP-Y-S).

Specificity: Akt2 (phospho-Ser474) antibody detects endogenous levels of Akt2 only when phosphorylated at serine 474.

Tested Application: WB and IHC

Application Notes : Rabbit IgG in phosphate buffered saline (without Mg²⁺ and Ca²⁺), pH 7.4, 150mM NaCl, 0.02% sodium azide and 50% glycerol.

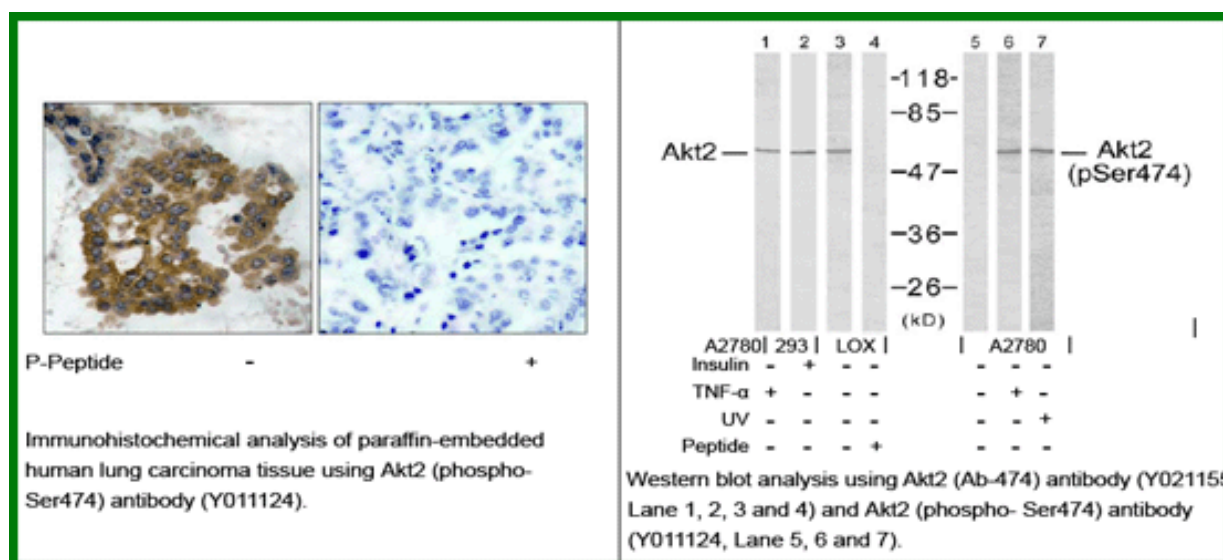
Raised In: Rabbit

Purity: The antibody was affinity-purified from rabbit antiserum by affinity-chromatography using epitope-specific phosphopeptide. The antibody against non-phosphopeptide was removed by chromatography using non-phosphopeptide corresponding to the phosphorylation site.

Storage buffer: WB: 1:500~1:1000 IHC: 1:50~1:100

Form: Liquid

References : Sun M, et al. (2001) Cancer Res; 61(16): 5985-91. Yuan ZQ, et al. (2000) Oncogene; 19(19): 2324-30. Meier R, et al. (1997) J Biol Chem; 272(48): 30491-7.



For research use only

Antagene, Inc. Toll Free: 1-866-964-2589, Fax: 1-888-225-1868, info@antageneinc.com,
www.antageneinc.com