



ATM (Phospho-Ser1981) Antibody

Cat. #: ANTY011122

Species: Human, Mouse and Rat

Quantity: 100ug

Concentration: 100ug/100ul

Storage and Stability: Store at -20°C/1 year

Immunogen: The antiserum was produced against synthesized phosphopeptide derived from human ATM around the phosphorylation site of serine 1981 (E-G-SP-Q-S).

Specificity: ATM (phospho-Ser1981) antibody detects endogenous levels of ATM only when phosphorylated at serine 1981.

Tested Application: IHC

Application Notes : Rabbit IgG in phosphate buffered saline (without Mg²⁺ and Ca²⁺), pH 7.4, 150mM NaCl, 0.02% sodium azide and 50% glycerol.

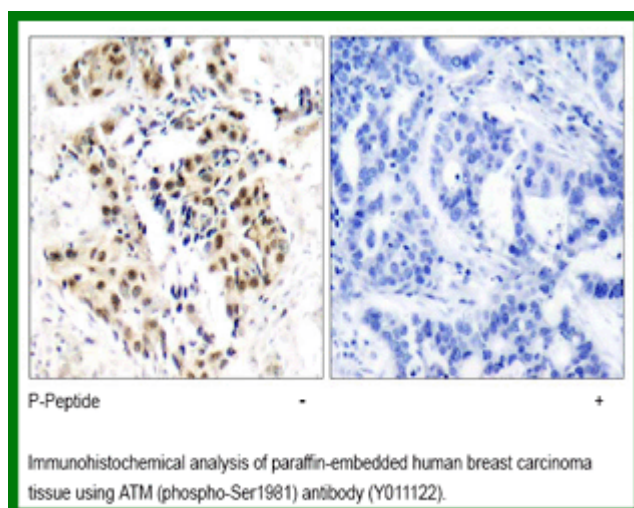
Raised In: Rabbit

Purity: The antibody was affinity-purified from rabbit antiserum by affinity-chromatography using epitope-specific phosphopeptide. The antibody against non-phosphopeptide was removed by chromatography using non-phosphopeptide corresponding to the phosphorylation site.

Storage buffer: IHC: 1:50~1:100

Form: Liquid

References : Gupta A. et al. (2005) Mol Cell Biol. 25(12): 5292-5305. Bernstein JL. et al. (2002) Breast Cancer Res. 4(6): 249-252. Silverman J. et al. (2004) Genes Dev. 18(17): 2108-2119. Nakada D. et al. (2003) Nucleic Acids Res. 31(6): 1715-1724.



For research use only

Antagene, Inc. Toll Free: 1-866-964-2589, Fax: 1-888-225-1868, info@antageneinc.com,
www.antageneinc.com