



## Chk1 (Phospho-Ser345) Antibody

**Cat. #:** ANTY011121

**Species:** Human, Mouse and Rat

**Quantity:** 100ug

**Concentration:** 100ug/100ul

**Storage and Stability:** Store at -20°C/1 year

**Immunogen:** The antiserum was produced against synthesized phosphopeptide derived from human Chk1 around the phosphorylation site of serine 345 (S-F-SP-Q-P).

**Specificity:** Chk1 (phospho-Ser345) antibody detects endogenous levels of Chk1 only when phosphorylated at serine 345.

**Tested Application:** IHC

**Application Notes:** Rabbit IgG in phosphate buffered saline (without Mg<sup>2+</sup> and Ca<sup>2+</sup>), pH 7.4, 150mM NaCl, 0.02% sodium azide and 50% glycerol.

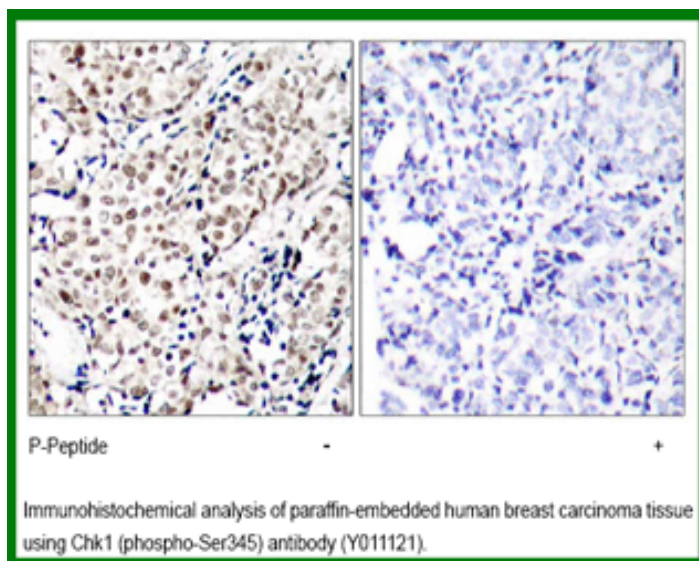
**Raised In:** Rabbit

**Purity:** The antibody was affinity-purified from rabbit antiserum by affinity-chromatography using epitope-specific phosphopeptide. The antibody against non-phosphopeptide was removed by chromatography using non-phosphopeptide corresponding to the phosphorylation site.

**Storage buffer:** IHC: 1:50~1:100

**Form:** Liquid

**References :** Shiromizu T, et al. (2006) Genes CellsMay: 11(5): 477-85. Hang YW, et al. (2005) Mol Cell: 19(5): 607-18. Lu X, et al. (2005) Genes Dev: 19(10): 1162-74. Falck J, et al. (2005) Nature: 434(7033): 605-11.



**For research use only**

Antagene, Inc. Toll Free: 1-866-964-2589, Fax: 1-888-225-1868, [info@antageneinc.com](mailto:info@antageneinc.com),  
[www.antageneinc.com](http://www.antageneinc.com)