



β-Catenin (Phospho-Thr41/Ser45) Antibody

Cat. #: ANTY011116

Species: Human, Mouse and Rat

Quantity: 100ug

Concentration: 100ug/100ul

Storage and Stability: Store at -20°C/1 year

Immunogen: The antiserum was produced against synthesized phosphopeptide derived from human β-Catenin around the phosphorylation site of threonine 41/serine 45 (A-T-TP-T-A-P-SP-L-S).

Specificity: β-Catenin (phospho-Thr41/Ser45) antibody detects endogenous levels of β-Catenin only when phosphorylated at threonine 41/serine 45.

Tested Application: Western Blot

Application Notes : Rabbit IgG in phosphate buffered saline (without Mg²⁺ and Ca²⁺), pH 7.4, 150mM NaCl, 0.02% sodium azide and 50% glycerol.

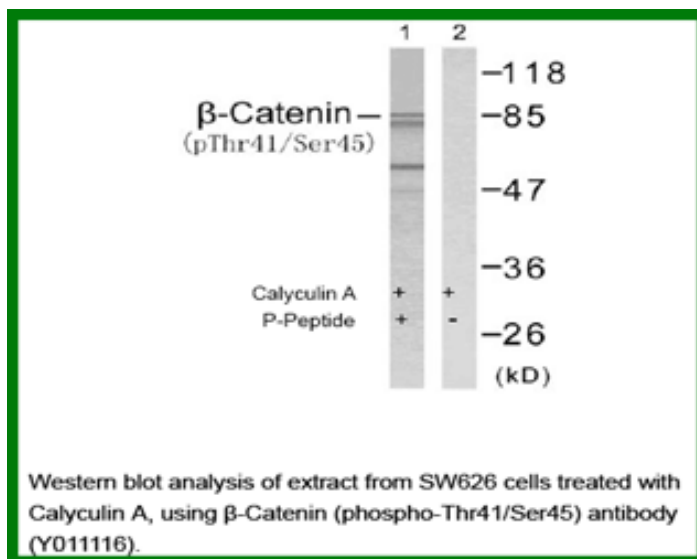
Raised In: Rabbit

Purity: The antibody was affinity-purified from rabbit antiserum by affinity-chromatography using epitope-specific phosphopeptide. The antibody against non-phosphopeptide was removed by chromatography using non-phosphopeptide corresponding to the phosphorylation site.

Storage buffer: WB: 1:500~1:1000

Form: Liquid

References : Provost E, et al. (2003) J Biol Chem 278(34): 31781-9. Sakanaka C, et al. (2003) J Biochem (Tokyo); 132(5): 697-703. Amit S, et al. (2002) Genes Dev; 16(9): 1066-76. Liu C, et al. (2002) Cell; 108(6): 837-47. Provost E, et al. (2005) Oncogene; 24(16): 2667-76.



For research use only

Antagene, Inc. Toll Free: 1-866-964-2589, Fax: 1-888-225-1868, info@antageneinc.com,
www.antageneinc.com