



## FKHR (Phospho-Ser256) Antibody

**Cat. #:** ANTY011115

**Species:** Human, Mouse and Rat

**Quantity:** 100ug

**Concentration:** 100ug/100ul

**Storage and Stability:** Store at -20°C/1 year

**Immunogen:** The antiserum was produced against synthesized phosphopeptide derived from human FKHR around the phosphorylation site of serine 256 (A-A-SP-M-D).

**Specificity:** FKHR (phospho-Ser256) antibody detects endogenous levels of FKHR only when phosphorylated at serine 256.

**Tested Application:** WB, IHC

**Application Notes** Rabbit IgG in phosphate buffered saline (without Mg<sup>2+</sup> and Ca<sup>2+</sup>), pH 7.4, 150mM NaCl, 0.02% sodium azide and 50% glycerol.

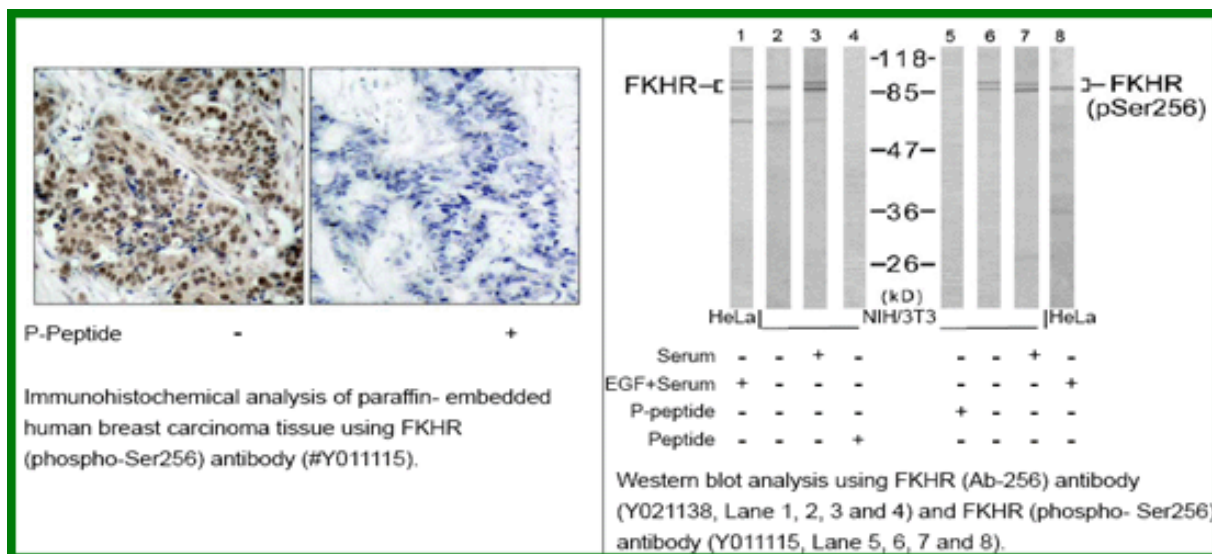
**Raised In:** Rabbit

**Purity:** The antibody was affinity-purified from rabbit antiserum by affinity-chromatography using epitope-specific phosphopeptide. The antibody against non-phosphopeptide was removed by chromatography using non-phosphopeptide corresponding to the phosphorylation site.

**Storage buffer:** WB: 1:500~1:1000 IHC: 1:50~1:100

**Form:** Liquid

**References** : Gan L, et al. (2005) J Neurochem; 93(5): 1209-19. Smith WW, et al. (2005) J Cell Biol; 169(2): 331-9. Di Maira G, et al. (2005) Cell Death Differ; 12(6): 668-77. Horn S, et al. (2004) Leukemia; 18(11): 1839-49.



**For research use only**

Antagene, Inc. Toll Free: 1-866-964-2589, Fax: 1-888-225-1868, [info@antageneinc.com](mailto:info@antageneinc.com),  
[www.antageneinc.com](http://www.antageneinc.com)