



Tau (Phospho-Thr231) Antibody

Cat. #: ANTY011110

Species: Human, Mouse and Rat

Quantity: 100ug

Concentration: 100ug/100ul

Storage and Stability: Store at -20°C/1 year

Immunogen: The antiserum was produced against synthesized phosphopeptide derived from human Tau around the phosphorylation site of threonine 231 (V-R-TP-P-P).

Specificity: Tau (phospho-Thr231) antibody detects endogenous levels of Tau only when phosphorylated at threonine 231.

Tested Application: WB

Application Notes : Rabbit IgG in phosphate buffered saline (without Mg²⁺ and Ca²⁺), pH 7.4, 150mM NaCl, 0.02% sodium azide and 50% glycerol.

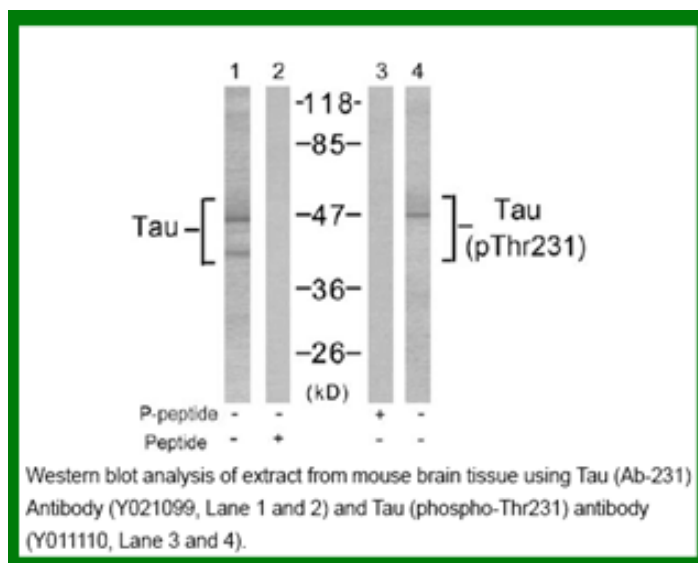
Raised In: Rabbit

Purity: The antibody was affinity-purified from rabbit antiserum by affinity-chromatography using epitope-specific phosphopeptide. The antibody against non-phosphopeptide was removed by chromatography using non-phosphopeptide corresponding to the phosphorylation site.

Storage buffer: WB: 1:500~1:1000

Form: Liquid

References : Yen S.H.et.al. (1997) Neurochem. 69:1709-1719. Beausoleil S.A.et.al. (2004) Proc. Natl. Acad. Sci. U.S.A. 101:12130-12135. Wintjens R.et.al. (2001) Biol. Chem. 276:25150-25156. Babu J.R.et.al.(2005) Neurochem. 94:192-203. Goedert M., Spillantini M.G. (2000) Biochim. Biophys. Acta 1502:110-121.



For research use only

Antagene, Inc. Toll Free: 1-866-964-2589, Fax: 1-888-225-1868, info@antageneinc.com,
www.antageneinc.com