



Tau (Phospho-Ser214) Antibody

Cat. #: ANTY011109

Species: Human, Mouse and Rat

Quantity: 100ug

Concentration: 100ug/100ul

Storage and Stability: Store at -20°C/1 year

Immunogen: The antiserum was produced against synthesized phosphopeptide derived from human Tau around the phosphorylation site of serine 214 (T-P-SP-L-P).

Specificity: Tau (phospho-Ser214) antibody detects endogenous levels of Tau only when phosphorylated at serine 214.

Tested Application: WB

Application Notes : Rabbit IgG in phosphate buffered saline (without Mg²⁺ and Ca²⁺), pH 7.4, 150mM NaCl, 0.02% sodium azide and 50% glycerol.

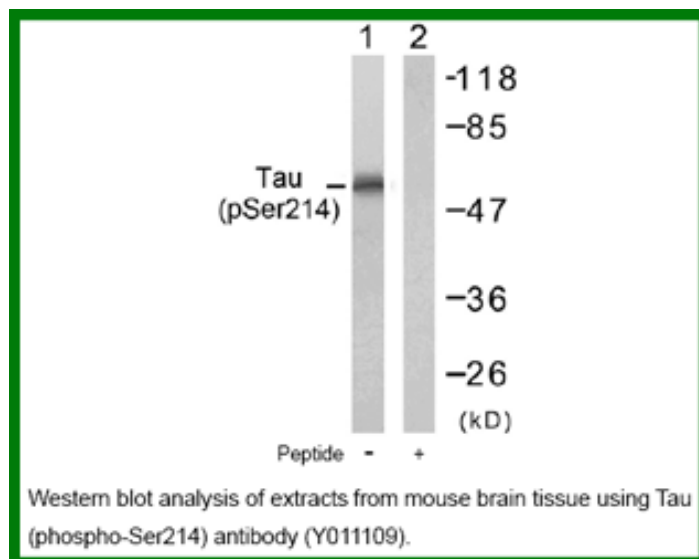
Raised In: Rabbit

Purity: The antibody was affinity-purified from rabbit antiserum by affinity-chromatography using epitope-specific phosphopeptide. The antibody against non-phosphopeptide was removed by chromatography using non-phosphopeptide corresponding to the phosphorylation site.

Storage buffer: WB: 1:500~1:1000

Form: Liquid

References : Smet C, et al. (2005) FEBS Lett; 579(19): 4159-64. Puig B, et al. (2005) Acta Neuropathol (Berl). Gvtz J, et al. (2001) Science; 293(5534): 1491-5. Illenberger S, et al. (1998) Mol Biol Cell; 9(6): 1495-512.



For research use only

Antagene, Inc. Toll Free: 1-866-964-2589, Fax: 1-888-225-1868, info@antageneinc.com,
www.antageneinc.com