



Tau (Phospho-Thr205) Antibody

Cat. #: ANTY011108

Species: Human, Mouse and Rat

Quantity: 100ug

Concentration: 100ug/100ul

Storage and Stability: Store at -20°C/1 year

Immunogen: The antiserum was produced against synthesized phosphopeptide derived from human Tau around the phosphorylation site of threonine 205 (P-G-TP-P-G).

Specificity: Tau (phospho-Thr205) antibody detects endogenous levels of Tau only when phosphorylated at threonine 205.

Tested Application: WB

Application Notes : Rabbit IgG in phosphate buffered saline (without Mg²⁺ and Ca²⁺), pH 7.4, 150mM NaCl, 0.02% sodium azide and 50% glycerol.

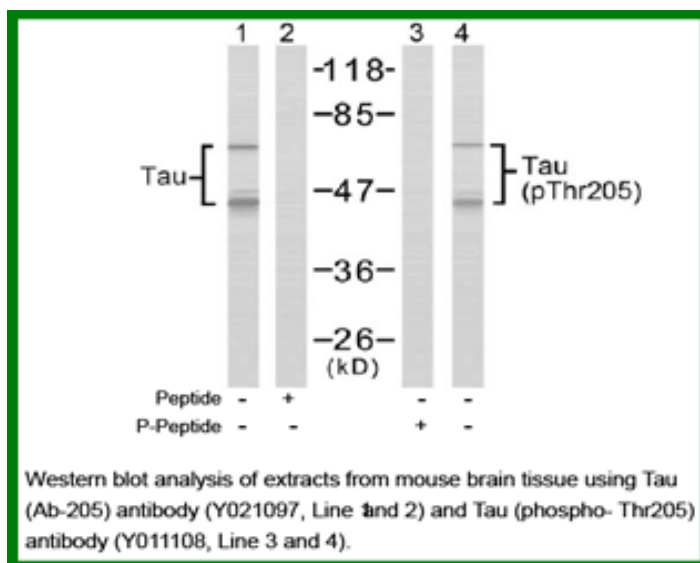
Raised In: Rabbit

Purity: The antibody was affinity-purified from rabbit antiserum by affinity-chromatography using epitope-specific phosphopeptide. The antibody against non-phosphopeptide was removed by chromatography using non-phosphopeptide corresponding to the phosphorylation site.

Storage buffer: WB: 1:500~1:1000

Form: Liquid

References : del C Alonso A, et al. (2004) J Biol Chem; 279(33): 34873-81. Li G, Yin H, Kuret J (2004) J Biol Chem; 279(16): 15938-45. Giasson BI, et al. (2002) Biochemistry; 41(51): 15376-87. Liu F, et al. (2002) FEBS Lett; 530(1-3): 209.



For research use only

Antagene, Inc. Toll Free: 1-866-964-2589, Fax: 1-888-225-1868, info@antageneinc.com,
www.antageneinc.com